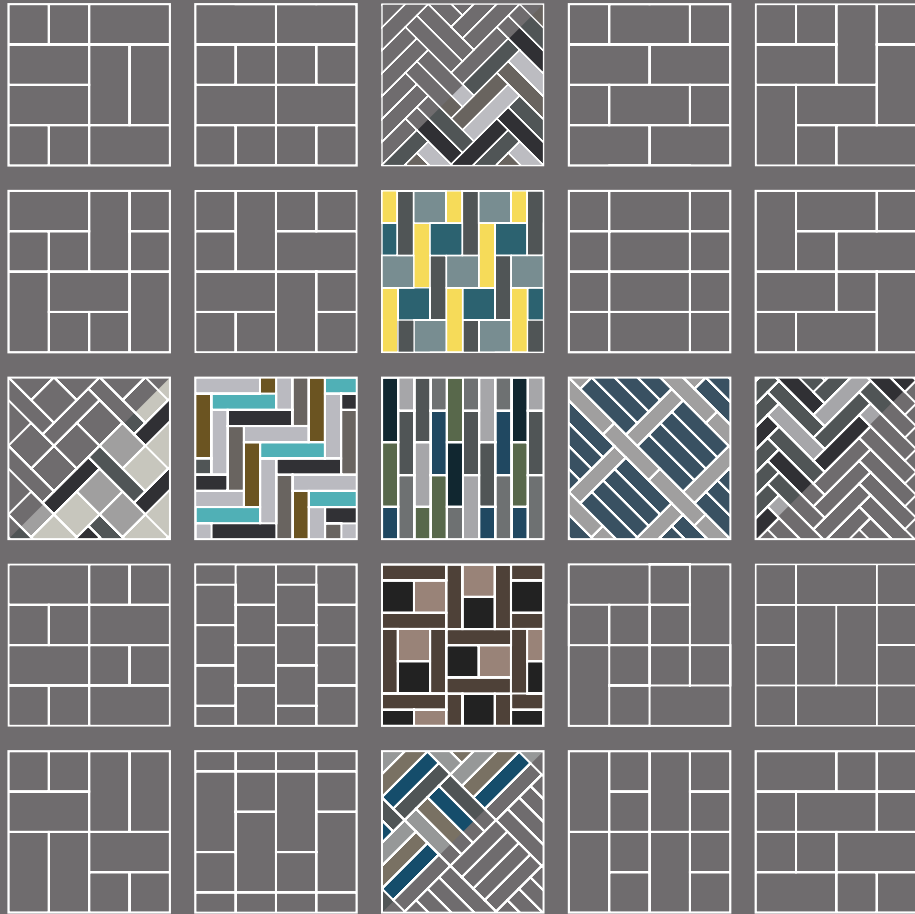




Goodrich Global
SINCE 198

OMBRE

Inspirational & Unique



 **LOOM⁺**

WOVEN DESIGN FLOORING



LOOM⁺ DIFFERENCE

DESIGN AND TECHNOLOGY
ARE WOVEN TOGETHER

Infinite DESIGN spectrum

Only LOOM⁺ enables unique variation of creating your own floor by mixing and matching different patterns in two tile sizes.



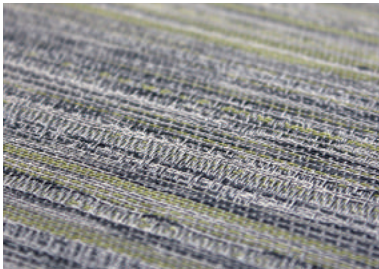
LOOM+
DIFFERENCE

Distinguished NOX EMT™ Core Structure

The first woven flooring with proven NOX EMT™ core structure that ensures the most stable and durable installation.

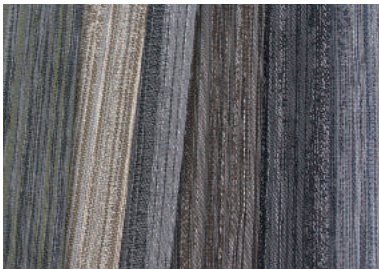
LOOM+ DESIGN

PLAY with COLOR, SIZE and TEXTURE



Profound Color Composition

Realizing multiple tones of color - carefully selected by artists - we provide you with very unique colors that expresses LOOM+ in harmony with surrounding interiors.



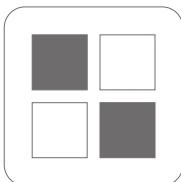
Infinite array of color and texture

Available in 59 colors covering diverse tones like neutral, cool, warm, light, and dark in five different yarn thicknesses, we give you nine unique design patterns.



Designed for mix & match

Creative and unique 'mix & match' only by LOOM+ is realized by introducing the same weaving system to nine design patterns.



50x50cm
Standard size



25x100cm
Plank size

Optimal 2 Size variation

With our unique 2 module sizes of 50cmx50cm and 25cmx100cm, the first introduced in woven flooring market, you can elevate the flat environments to inspiring interior spaces.

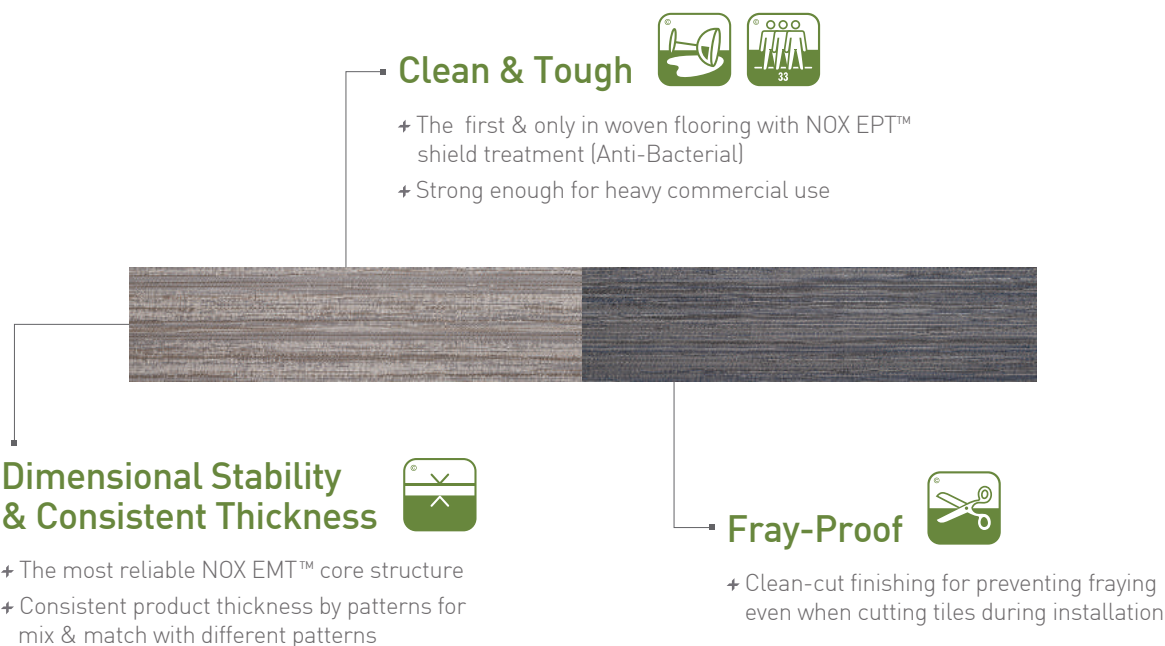
LOOM+ TECHNOLOGY

PROVEN INNOVATION



Distinguished NOX EMT™ Core Structure

NOX EMT™ core structure featured with innovative functionality and safety, proven in more than 50 countries over 20 years



Safe

Certified non-toxic, phthalate-free, and fiberglass-free fabric



Quick

Quick and Easy ECOLAY® installation without glue



Easy

Minimal cleaning time and low maintenance



Silent & Soft

Soft surface absorbing sound



Non-Slip

Slip-resistance with woven fabric surface



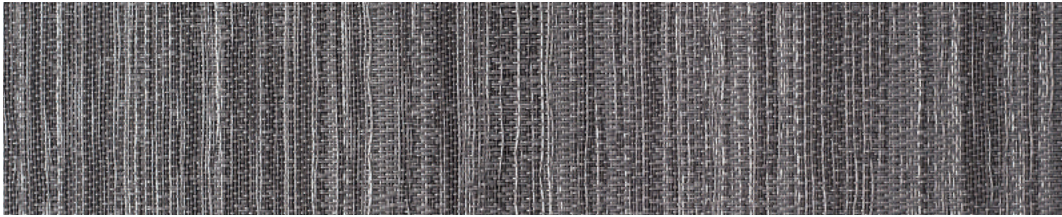
Colorfast

Colorfast properties retain gorgeous original colors over time

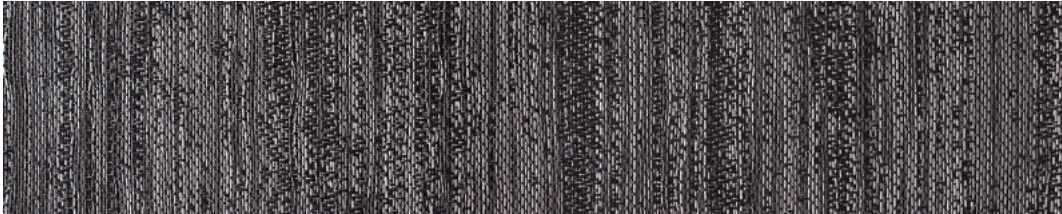
OMBRE

Inspirational & Unique

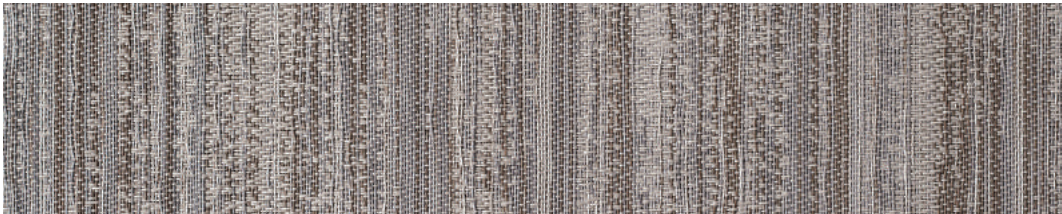
NOX Ombre collection offers a unique linear pattern, rich texture and beautiful accent tones available in 6 sophisticated colors in our new 25cmx100cm plank. Designed to capture its audience with expanding and contracting rhythms.



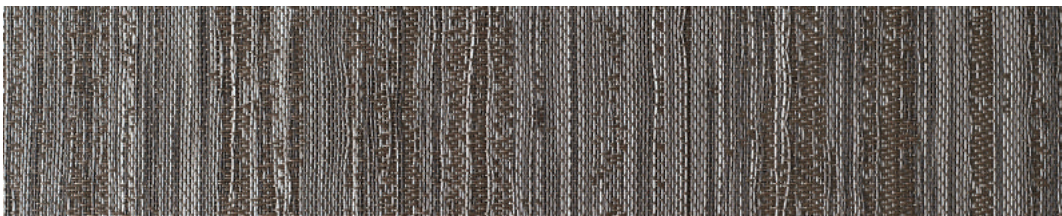
FQ-2401



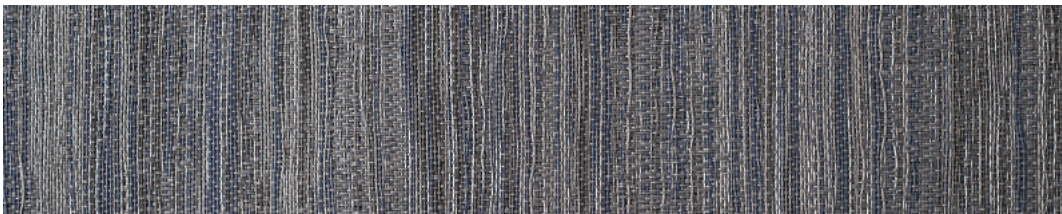
FQ-2402



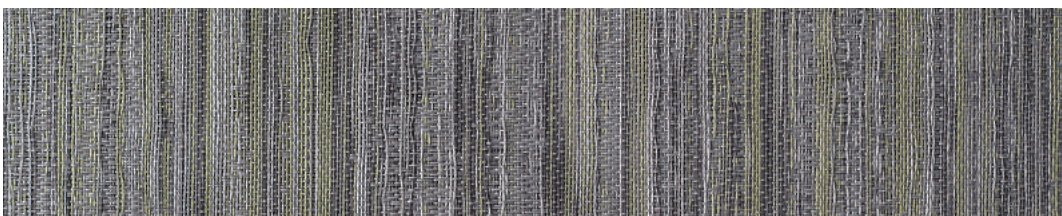
FQ-2403



FQ-2404



FQ-2405



FQ-2406

Reinvent Spaces with

LOOM⁺ PLAY!

New 25cmx100cm MIXMATCH plank brings new proportion and scale to your flooring to create fresh and exciting designs. In addition to new MIXMATCH plank, LOOM⁺ modular system includes 50cmx50cm squares.

All work together in any combination, giving you the freedom to create your own design by mixing & matching different patterns and colors in 2 size variations.

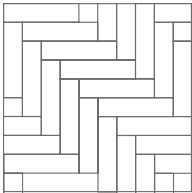


50x50cm

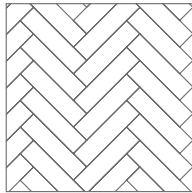


25x100cm

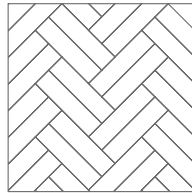
NEW LOOM⁺ PLAY!



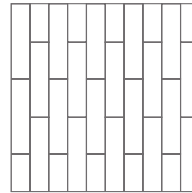
LOOM PLAY #21



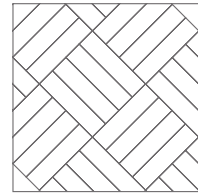
LOOM PLAY #22



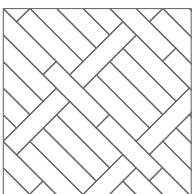
LOOM PLAY #23



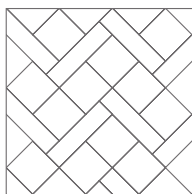
LOOM PLAY #24



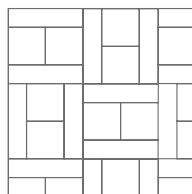
LOOM PLAY #25



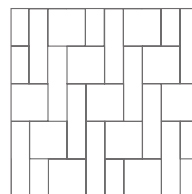
LOOM PLAY #26



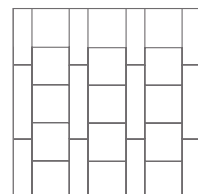
LOOM PLAY #27



LOOM PLAY #28

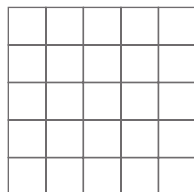


LOOM PLAY #29

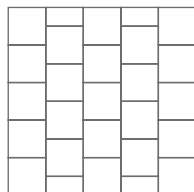


LOOM PLAY #30

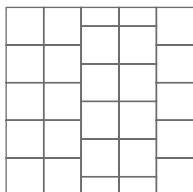
INSTALLATION CONCEPT GUIDE



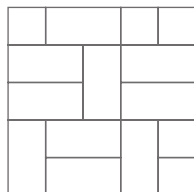
LOOM PLAY #1



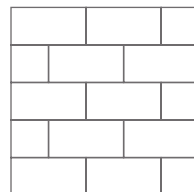
LOOM PLAY #2



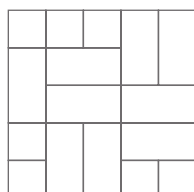
LOOM PLAY #3



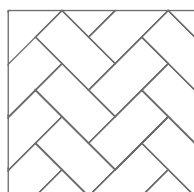
LOOM PLAY #4



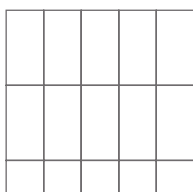
LOOM PLAY #5



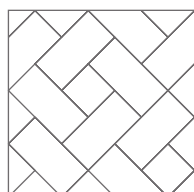
LOOM PLAY #6



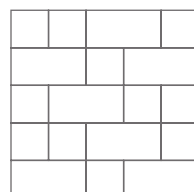
LOOM PLAY #7



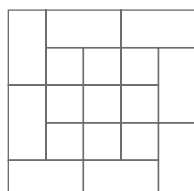
LOOM PLAY #8



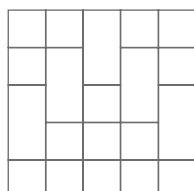
LOOM PLAY #9



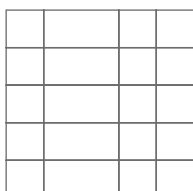
LOOM PLAY #10



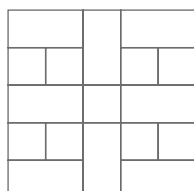
LOOM PLAY #11



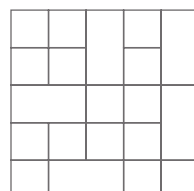
LOOM PLAY #12



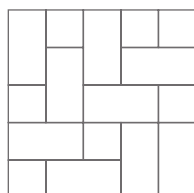
LOOM PLAY #13



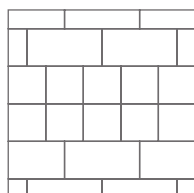
LOOM PLAY #14



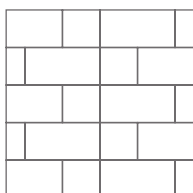
LOOM PLAY #15



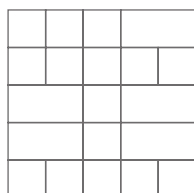
LOOM PLAY #16



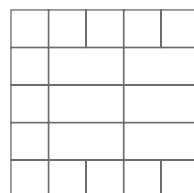
LOOM PLAY #17



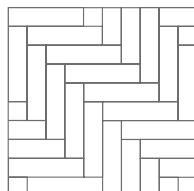
LOOM PLAY #18



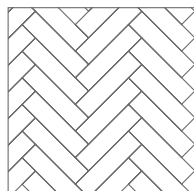
LOOM PLAY #19



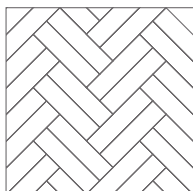
LOOM PLAY #20



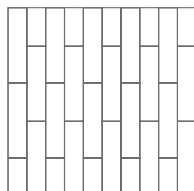
LOOM PLAY #21



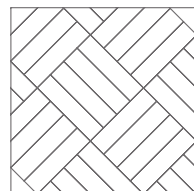
LOOM PLAY #22



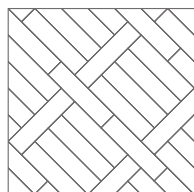
LOOM PLAY #23



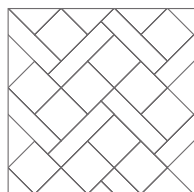
LOOM PLAY #24



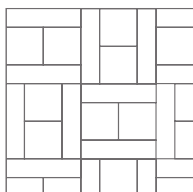
LOOM PLAY #25



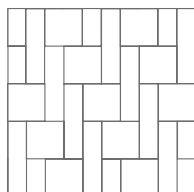
LOOM PLAY #26



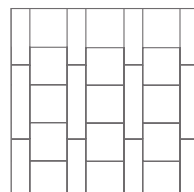
LOOM PLAY #27



LOOM PLAY #28



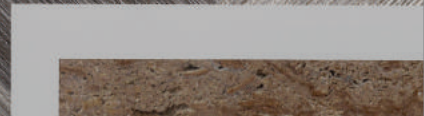
LOOM PLAY #29



LOOM PLAY #30

Residential

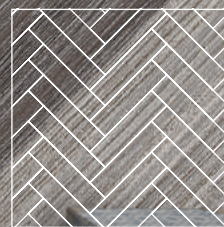
LOOM⁺
CREATE
YOUR OWN DESIGN



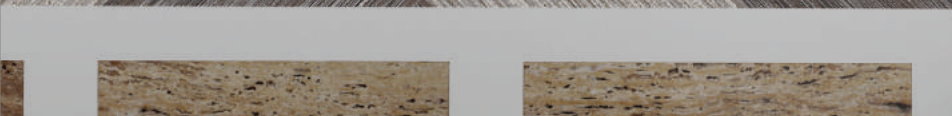
GLOBAL
REFERENCES



FQ-2403 FQ-2404



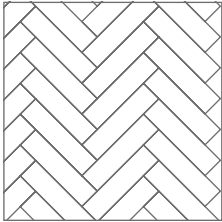
LOOM PLAY #22



Corporate

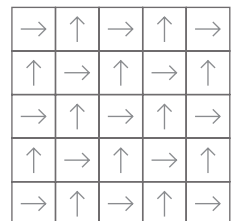


FQ-2401 FQ-2402 FQ-2403
FQ-2404 FQ-2405 FQ-2406



LOOM PLAY #22

Healthcare



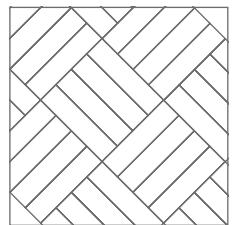
LOOM PLAY #1

FQ-2401

Retail shop



FQ-2402 FQ-2406

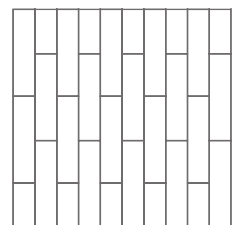


LOOM PLAY #25

Hospitality



FQ-2403

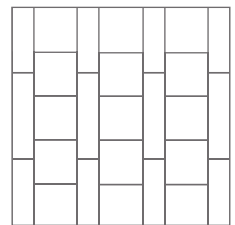


LOOM PLAY #24

Education & Libraries



FQ-2402 FQ-2405
FQ-2406

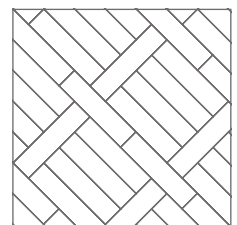


LOOM PLAY #30

Restaurant



FQ-2403 FQ-2404

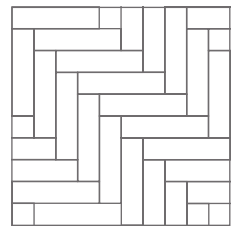


LOOM PLAY #26

Hospitality



FQ-2401 FQ-2402
FQ-2404














LOOM PLAY #21

TECHNICAL INFORMATION

1. Size & Packing

Size(mm)	Thickness(mm)	Pcs/Box	m ² /Box	Kg/m ²
500x500	3	16 pcs/box	4 m ²	5.0
	5	10 pcs/box	2.5 m ²	8.2
250x1000	3	16 pcs/box	4 m ²	5.0
	5	10 pcs/box	2.5 m ²	8.2

2. Test Result

Test Item		Standard	LOOM ⁺
Level of use		EN 685	33
Fraying		EN 1814	Frayproof
Thermal resistance		ISO 8302	0.02m ² K/W
Castor chair resistance		EN 985	No damage
Dimensional stability		ISO 23999 EN 986	≤ 0.10% (Norm: ≤ 0.25%) Passed
Fire resistance		EN 13501-1	Bfl -s1
Indoor air quality			Low VOC (floor score certified)
Underfloor heating		EN 12524	Suitable
Light fastness		ISO 105-B02	≥ 6
Slip resistance		DIN 51130 EN 13893	R11 DS
Flexibility		ISO 24344	Passed
Impact sound insulation		ISO 10140-3	9dB
Body Voltage		EN 1815	≤ 2KV
Squareness & Straightness		ISO 24342 ASTM F2055	No deviation ≤ 0.01 in
Residual indentation		ISO 24343-1 ASTM F1914	≤ 0.1mm < 8%
Resistance to chemicals		ISO 26987 ASTM F925	No Defects No Defects

3. Caution

Condition in at least 19°C or the normal temperature of the room where the product is to be laid, for at least 48 hours before installing. Cartons must be stacked less than 5 high and tiles removed 30 minutes before use. The site conditions must be maintained during installation and for at least 48 hours after completion. NOX Corporation will not accept claims where these instructions have not been followed.

4. Certificate



Visit www.loomplus.com for the detailed installation / maintenance guides and technical information.

Reinventing Spaces



WOVEN DESIGN FLOORING

Designed and Manufactured by NOX Corporation

Design Center & Office

KD Center, 355, Hyoryeong-ro, Seocho-gu, Seoul, 06643 Korea

Tel +82-2-520-7600

Fax +82-2-598-9674

www.noxglobal.com

E-mail info@noxglobal.com

NOX Corp. | KOREA

Shinho Factory

Shinho 2nd Factory, Yedang

Enbo Factory

Godeok Factory

Bongsan Factory

Deoksan Factory

Choongnam, Korea

NOX US | USA

NOX US

P.O. Box 824

931 S. Springville Avenue

Fostoria, OH 44830

Office +01-419-701-5060

Fax +01-419-701-5058