

THE DROP

Spring 2021



goodrich®

Goodrich Global
SINCE 1983



PHILLIP JEFFRIES

PHILIP JEFFRIES





INTRODUCING THE GROVE

SPRING 2021

PG. 40

8622 Palm Paradise



Item Shown: Palazzo 5461 Pine Portico
Designer: Lisa Gabrielson
Photographer: Lauren Rubenstein Photography

BEYOND the WALLS



Adding drama to unexpected places has never been easier. From the bookcase to the staircase, we love these creative uses for our wallcoverings. Send us some of your favorites.



IN STOCK & READY TO SHIP

Discover more than 1,000 stocked items available for same day shipping. From the finest, handcrafted naturals to our exquisite artisanal specialty designs - an array of colors, textures and styles are ready and waiting for YOU!



@AmberMarieInteriors



PJ PLANTS

At Phillip Jeffries, we are dedicated to inspiring a more beautiful world and are honored to partner with the Arbor Day Foundation to plant one tree for every order placed. This year, our efforts will be focused on Bladen Lakes State Forest, replanting trees and ensuring restoration for area wildlife affected by hurricane Florence. We're so proud of our team's dedication and passion for the preservation and care of our environment.

 **Arbor Day Foundation**[®]

PANTONE COLOR OF THE YEAR

In the 22 years that Pantone has been selecting a color of the year, this is just the second time they chose two colors. Ultimate Gray and Illuminating represent fortitude and hope for the future. This year also marks the first time a gray has been selected, and just the second time for a yellow. According to Leatrice Eiseman, Executive Director of the Pantone Color Institute, "this is a color combination that gives us resilience and hope. We need to feel encouraged and uplifted; this is essential to the human spirit." We couldn't agree more!



Item Shown: Flight 7051 Sandhill
 Designer: Jackson Paige Interiors
 Photographer: David Land Photo



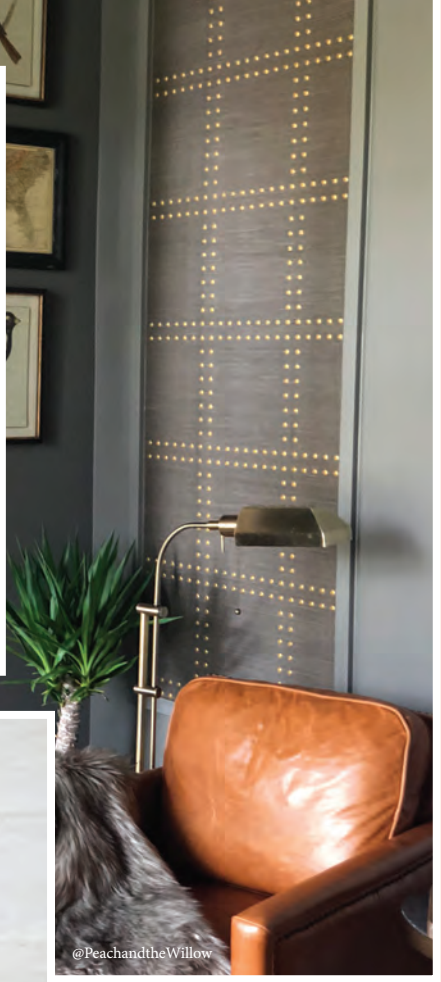
Splash 2465 Yellow Spark



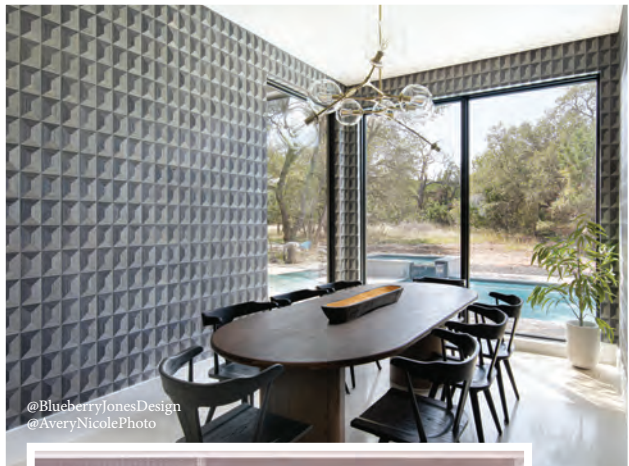
@ShawnaFeeley



@JudyKingInteriors
@MikeVanTassel



@PeachandtheWillow



@BlueberryJonesDesign
@AveryNicolePhoto



@AlidiaCoryInteriors



@OutlineInteriors
@MargaretRajic



@IleneChaseDesign
@Rymcdon



@JeffreyNeveInteriorDesign
@ChristopherStark

GET SOCIAL

Follow us to be inspired, tag us to be featured
@phillipjeffriesltd
#phillipjeffries

PJ PETS

We're inspired by our faithful furry friends whose loyalty and companionship are unwavering. They remain by our sides as we work or relax, adding love and joy to our days. These pets hold a special place in our hearts.



In loving memory, we dedicate our first installment of PJ Pets to Tuxx, immortalized here in his favorite spot.

(A) Wonder with Yacht Club Samples, Rachel Schwartz Design (B) Sake with 3125 Silk and Abaca in Amethyst Empire, IDF Studio, Christopher Stark Photo (C) Odell with 5202 Extra Fine Arrowroot in White, Casey Sanford (D) Biscuit and Gypsy with 7872 Vinyl Zebra wood in Farmhouse Brown, Meghan Davis (E) Baltazar with a PJ Mailer, Space Harmony Design (F) Koba Grey Krant with 4765 Juicy Jute in Moroccan Teal, Draper James (G) Tuxx with 5960 Marbleous in Bianco Perla, Widell and Boschetti, Brian Wetzel Photo (H) Nikolai "Niko" with 4260 Coffered Wood in Classic Oxford, Dane Austin Design (I) Axel with Custom Studs & Stripes, NoMad Design, Jennifer Ferrandi

PHILIP JEFFRIES





MIRAGE

8728 Sands of Time

PHILLIPJEFFRIES.COM/MIRAGE



HOUSE BEAUTIFUL

WHOLE HOME CONCEPT HOUSE
PG. 34

TABLE OF *CONTENTS*

WELCOME TO THE DROP

- 02 Letter from Philip & Jeffrey
- 04 This Is How We Roll
- 06 Shop PJ : Showrooms + More

08 PJ CONTRACT

SPOTLIGHT

- 10 IG Live Hosted by Philip Bershad
- 14 SPACES THAT WORK

IN FOCUS

- 16 Luxe Naturals
- 20 Wood Veneers
- 24 Digital Murals

PURE IMAGINATION

- 26 Design Your Own Digital

BETWEEN WALLS

- 32 Featuring Megan Gorelick

HOUSE BEAUTIFUL

- 34 Whole Home Concept House

40 SPRING 2021 : RESORT

PJ CATEGORIES

- 54 Naturals
- 58 Seamless
- 62 Textiles
- 66 Specialty
- 70 Digitals
- 74 Prints
- 78 Vinyls
- 82 Color Source

BEFORE & AFTER

- 84 Featuring Francis Interiors

LAST IMPRESSION

- 85 Featuring Revamp Interior Design





WE ARE GRATEFUL!

As we look back on this unprecedented year, we are filled with gratitude. We are grateful that we were able to keep our team together to provide you with the same level of service you have come to rely on over the years. We are grateful for our warehouse crew who came to work, day after day, to ensure your orders were fulfilled and our promises to you were kept. Most of all, we are grateful for your support and friendship as we navigate this storm together and prepare for bluer skies ahead.

Phillip Jeffries remains one of the few family businesses in the design industry. Our father, Eric, started Phillip Jeffries more than 44 years ago with just 10 grasscloths in a garage. Although we have grown from these humble beginnings to be one of the world's leaders in wallcovering, we are still committed to the family principles you have come to know and trust. We are thankful for you, the design community, and we promise to continue to inspire you through great design and exceptional service.

This year marks a new chapter for Phillip Jeffries. Since 2005, we have partnered with Holly Hunt/Knoll in offering the design community the best and most innovative wallcovering. After 14 successful years of showroom collaboration, our two brands are parting ways. This decision was not an easy one for us. We had to decide if we wanted to be one of many wallcovering brands or to tell our own story. We decided that to be the world's best in wallcovering, we had to stand on our own. Last year we opened our New York flagship showroom and this year we will open at least two more showrooms in Florida and Los Angeles. We will be directly available to the interior design trade in many more markets and look forward to meeting many of you and finding even more meaningful ways to connect.

We promise to continue to innovate, both in design and service, as we strive to reach our ultimate purpose - to inspire a more beautiful world, one wall, one person, and one day at a time.

We hope you enjoy our latest issue of The Drop and remain healthy and safe.

Our very best,

Philip & Jeffrey



THIS IS HOW WE ROLL



Ready-to-Ship
Wallcoverings



Same-Day
Shipping



Concierge-Level
Service

With more than a million yards of wallcovering in stock, the fastest delivery in the industry, and a world-class team of experts at your service, it's no wonder we're the most reliable resource in the industry. It's always a great day at Phillip Jeffries!

For more than 40 years, it's been our purpose to inspire a more beautiful world one wall at a time. At Phillip Jeffries, we're 100% committed to wallcovering. It's what we do. This is why our team is the most knowledgeable and trusted in the industry.



Need a sample?
We can get it to
you tomorrow!

SHOP PJ

SHOWROOMS + MORE

At Phillip Jeffries, we strive to make great design easy and accessible. Founded with just 10 grasscloths in a garage in New Jersey, we now sell our wallcoverings in 94 countries. In 2020, we opened our third corporate office in Singapore and will be opening at least two more showrooms in 2021 – one in Los Angeles and another in Florida. With more than 200 representatives in over 60 countries and a global website, we have more ways than ever to help you with your projects.

3 Corporate
Offices

94 Countries
Served

200+ Sales
Reps



NEW YORK • LONDON • PARIS • MILAN • MADRID • MUNICH • HONG KONG



PHILLIP JEFFRIES

CORPORATE OFFICES

- US | New Jersey
- UK | London
- Asia | Singapore

PJ SHOWROOMS

- New York
- Atlanta
- Boston
- London
- New Jersey
- San Francisco
- Los Angeles - opening 2021
- Hollywood, FL - opening 2021

PARTNER SHOWROOMS

- Costa Mesa | Harsey & Harsey
- Dallas | David Sutherland
- Denver | Town
- Houston | David Sutherland
- Honolulu | Pacific Finishes
- Kansas City | KDR
- Laguna Niguel | Harsey & Harsey
- Montreal | Theo
- Philadelphia | Croce
- San Diego | Harsey & Harsey
- San Juan | DDC
- Scottsdale | John Brooks
- St. Louis | KDR
- Troy | Tennant & Assoc



SINGAPORE • BEIJING • DUBAI • MOSCOW • MELBOURNE



Scan or Click for
more showrooms

PJ CONTRACT

PHILLIP JEFFRIES



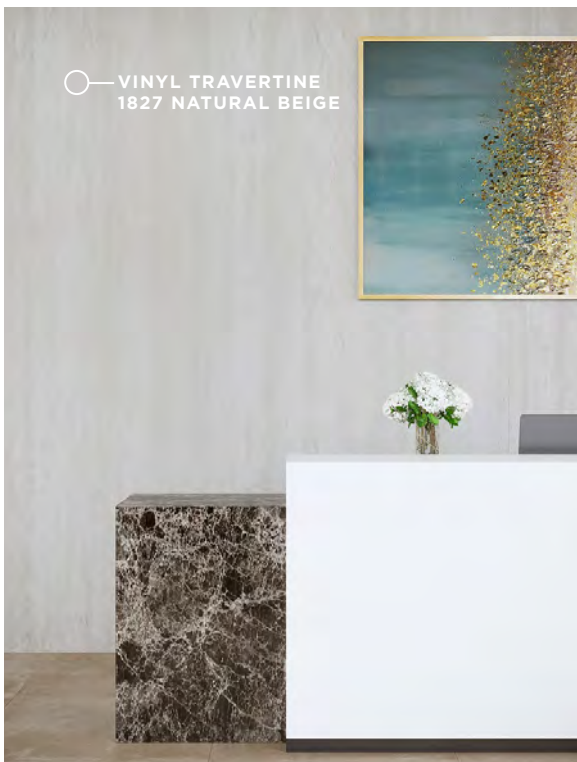
OASIS
8695 Haven Blue
PHILLIPJEFFRIES.COM/OASIS

PJ CONTRACT

When designing a commercial space, every detail impacts the guest experience. Wallcovering can be used to set the tone and create moments of wow, transforming the space into a luxury environment.

PJ Contract offers award-winning wallcovering designs engineered for commercial use. From luxurious grasscloths to Type II performance vinyls, our versatile collection elevates commercial spaces into destinations. With the largest selection of ready-to-ship wallcovering and fastest delivery, we make great design easy.

Choose from one of our existing designs or let us create a custom wallcovering just for you. The best the industry has to offer is now more accessible and affordable than ever.



IN STOCK

DURABLE

CUSTOM DESIGN

COMPETITIVE PRICING

Scan or Click
to learn more



SPOTLIGHT

IG LIVE : BEHIND THE DESIGN

Hosted by Philip Bershad



Item Shown: Tidal Stripe 5372 Waters Edge | Photographer: Helen Norman

Laura Hodges



@laurahodgesstudio
laurahodgesstudio.com

"AS A COMPANY, WE WORK TO RECYCLE AS MUCH AS POSSIBLE AND WE DONATE ALL OF OUR CLIENTS FURNITURE, CABINETRY, WHATEVER IS STILL IN GOOD CONDITION THAT SOMEBODY COULD USE."

Favorite PJ Wallcovering:
Tidal Stripe

Design Tip That Never Fails:
Start with a piece of fabric, rug, or art. Pull all the colors together and really get some inspiration.

Favorite Design Style:
Eclectic



@thomafilicia
thomfilicia.com



Item Shown: Zebra Grass 3312 Iced Cappuccino | Photographer: Eric Piasecki/OTTO

"YOUR INTERIORS SHOULD HAVE THE SAME ATTRIBUTES THAT YOU'D WANT YOUR BEST FRIEND TO HAVE, OR YOUR SIGNIFICANT OTHER. YOU WANT THEM TO BE INTERESTING, DYNAMIC, FUN, DOWN TO EARTH, SPONTANEOUS."

Thom Filicia

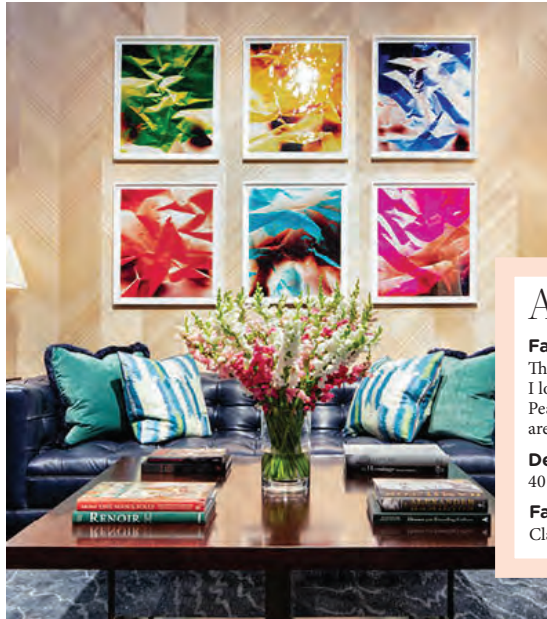
Favorite PJ Wallcovering:
Cape Town

Design Tip That Never Fails:
Trust your interior designer

Favorite Design Style:
It's all about personalization and telling your story



@alexahamptoninc
alexahampton.com



Item Shown: Against the Grain 4270 Paulownia Parquet | Photographer: Steve Freihorn

"I TRULY BELIEVE THAT THE HOUSE SHOULD REFLECT THE OWNER, NOT THE DECORATOR."

Alexa Hampton

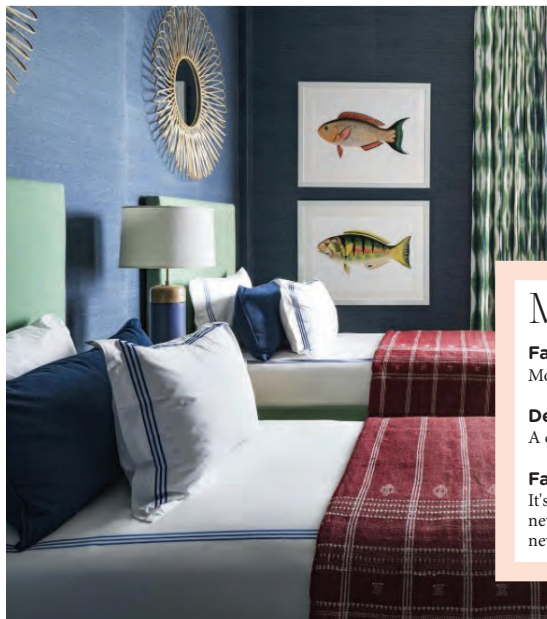
Favorite PJ Wallcovering:
That's like choosing between my children. I love so many PJ wallcoverings! Peak Chic, Amalfi Silk, and Manila Hemp are among my favorites.

Design Tip That Never Fails:
40 watt light bulbs

Favorite Design Style:
Classical



@martybullard
martylawrencebullard.com



Item Shown: Manila Hemp 5241 Cloudless | Project: The Residences at Seafire, Cayman Islands

"WALLPAPER IS ONE OF THE GREAT TRICKS OF DECORATING. AND IN TIMES LIKE THESE, WHEN PEOPLE WANT A REAL BANG FOR THEIR BUCK AND AN INSTANT WAY TO TRANSFORM THEIR SPACE, THERE IS NOTHING LIKE A WALLCOVERING."

Martyn Lawrence Bullard

Favorite PJ Wallcovering:
Mosaic Mamba

Design Tip That Never Fails:
A dimmer switch

Favorite Design Style:
It's ever changing. Stay open to the new and unexpected and you'll never get bored.



@woodson_rummerfields
wandrdesign.com



Item Shown: Star Dust Silk 3224 Supernova White | Photographer: Karyn Millet

"FOR DESIGNERS STARTING OUT I TELL THEM TO GET ON THE PHONE. REACH OUT TO PEOPLE YOU ADMIRE. RESEARCH AS MUCH AS YOU CAN."

Woodson & Rummerfield's

Favorite PJ Wallcovering:

Jaime: Glam Grass and Silk & Abaca
Ron: Grasscloths

Design Tip That Never Fails:

Good lighting

Favorite Design Style:

Mid-Century Opulence



@michelboyd
michelsmithboyd.com



Item Shown: Agate 5932-B Moonstone | Photographer: Courtesy of Michel Smith Boyd

"I'M A ROMANTIC AND INTERIOR DESIGN IS A ROMANTIC NOTION. IN A WORLD WHERE EVERYTHING IS SO READILY AVAILABLE AND SO QUICK, I LIKE THE IDEA OF REPRESENTING ROMANCE AND KEEPING IT ALIVE."

Michel Smith Boyd

Favorite PJ Wallcovering:

My fav PJ wallcovering is always the latest collection

Design Tip That Never Fails:

Check your client's closet. It's a great clue as to what colors they like to live in.

Favorite Design Style:

Regency



@apriltomlininteriors
apriltomlin.com



Item Shown: Western Weave 1228 Straw Hat | Photographer: Paige Rumore

"THE ROOMS WE CHOOSE TO USE WALLPAPER ARE ALWAYS THE SHOWSTOPPER ROOMS. THEY'RE ALWAYS THE ROOMS PEOPLE COMMENT ON THE MOST."

April Tomlin

Favorite PJ Wallcovering:

I love the dark plaids. I think they are beautiful for masculine spaces and there aren't many masculine wallpapers.

Design Tip That Never Fails:

If you have a trim color, paint the wall that color

Favorite Design Style:

Very natural, earth tones and neutrals

SPOTLIGHT

IG LIVE : BEHIND THE DESIGN

Hosted by Philip Bershad



Item Shown: Wild Woods 7903 Sequoia Silver | Photographer: Douglas Friedman

"WE BEGIN WITH A NARRATIVE, BECAUSE AT OUR CORE WE'RE STORYTELLERS. WE CREATE EXPERIENCES."

Favorite PJ Wallcovering:
Concrete Washi. There's something about the texture that I just love.

Design Tip That Never Fails:
Dimmer switch

Favorite Design Style:
Eclectic

Ken Fulk



@kenfulk
kenfulk.com

SPACES THAT WORK



While much remains uncertain in the world, one thing is crystal clear – the events of 2020 transformed the workplace. Once considered a luxury, working from home is now a reality for many, and there was little time to adapt. What began as improvised set ups have become well-designed workspaces. More simple designs with far less clutter allow us to focus despite the many distractions, and to integrate these spaces into our homes. Unbound from the limitations of our former offices, we are now free to express our own personality and style.



(A) 1098 Abaca Harvest in Deep Zircon, Foxtail Interiors, Emily Followill Photography (B) 7943 Vinyl Great Wall in Dynasty Blue, Ashley Martin Home, Native House Photography (C) 5707 Rivets® in Bronze on Jute, Lillian August, Lorin Klaris Photography (D) 4475 Savile Suiting Plaid in White on Antique, Simran Design, Tim Hirschmann (E) 1266 Latitude Silk in Blue Skys, Scott Sanders LLC, © 2020 Nickolas Sargent of DBA Sargent Photography (F) 1871 Granite in Plata, Marc-Michaels Interior Design (G) 5674 Union Square in Black on White Manila Hemp, Tobi Fairley Interior Design, Michael Rodenbush



CAPE TOWN

6752 Coastal Seagreen

Designer: Gray Space Interiors
Photographer: Brian Wetzel Photo



LUXE NATURALS

IN FOCUS

Our Luxe Naturals collection features distinctive dimensional designs artistically crafted from natural materials. The hallmarks of this collection are the handwork and layering of natural elements, such as authentic grasses, hems, paper, and water hyacinths. These wallcoverings offer a variety of unique patterns and textures in a wide range of colors. The finest natural materials are taken to a whole new dimension in this luxurious collection.

IN FOCUS

LUXE NATURALS



CAPE TOWN

Authentic water hyacinth is hand laid by artisans and laminated to a non-woven backing and washed with color for an organic feel. Due to the natural characteristics of the water hyacinth and the type of color application, some designs exude a beautiful watercolor effect with a variance of highs and lows while others have a more saturated look. Choose from an array of colors, from soft and subtle to bold and striking. These fresh designs capture the laid-back mood of waterfront living in the most luxurious of ways.



Designer: Lindye Galloway Interiors
Photographer: Chad Mellon



— ST. BARTS SERENITY
4211 SUN DRENCHED



— METALLIC OMBRÉ
3163 GOLD

Authentic metallic leafing applied to natural grounds, abaca pulp combed into intricate designs, hand-woven sisal cut into shapes and hand-applied to make an intricate pattern – this is the type of artistry that defines our collection of Luxe Naturals.

Scan or Click to shop Luxe Naturals

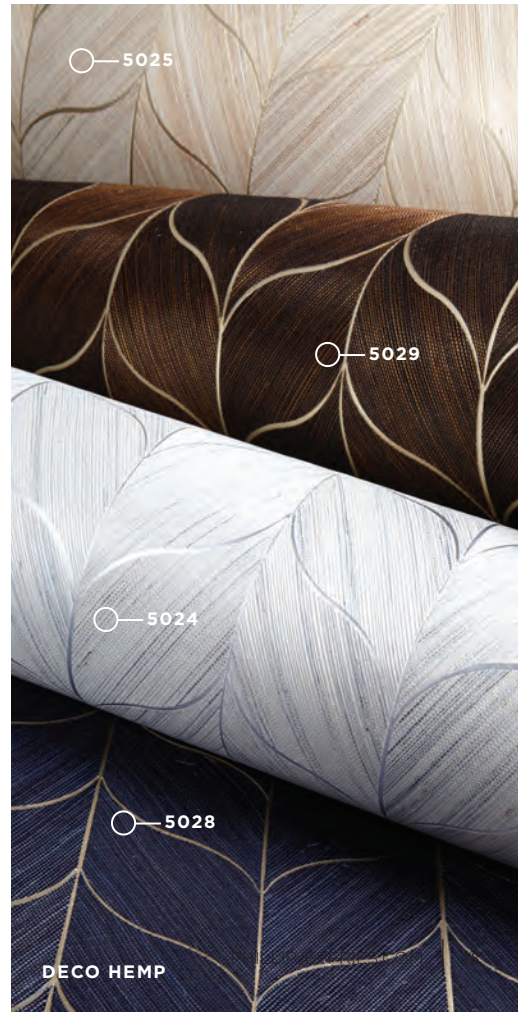


Designer: Cortizo Interiors LLC
Photographer: Jessica Delaney



— CONCRETE WASHI
3596 SET IN CEMENT

Designer: Annie Carr
Photographer: Zeke Ruelas



— 5025

— 5029

— 5024

— 5028

DECO HEMP



COFFERED WOOD

4259 Beach House

Designer: KidderKokx Interior Architecture and Design

Photographer: Sarah M Winchester

WOOD VENEERS

IN FOCUS



Our Wood Veneer wallcoverings add the warmth and natural beauty of wood to any space. They are perfect for walls, ceilings, columns, bookcases, and a variety of other surfaces. These wallcoverings are handcrafted from authentic wood that is sliced into thin layers, cut into shapes, dyed, and hand laid into a variety of intricate patterns. These refined, architectural designs are extremely versatile, adapting to an array of design styles – from modern to eclectic. They are also surprisingly malleable and can wrap around corners and curves. We offer a range of colors, from traditional woods to the bold and unexpected. There is no better or easier way to infuse natural beauty into an interior.

*THIS TIME INTENSIVE
PROCESS CREATES THE
LOOK OF WOVEN WOOD
WITH POPS OF LEAFING
FOR AN ORGANICALLY
AGED APPEAL.*

○ GILDED GRID
6412 BEIGE AND GOLD



WOOD VENEERS

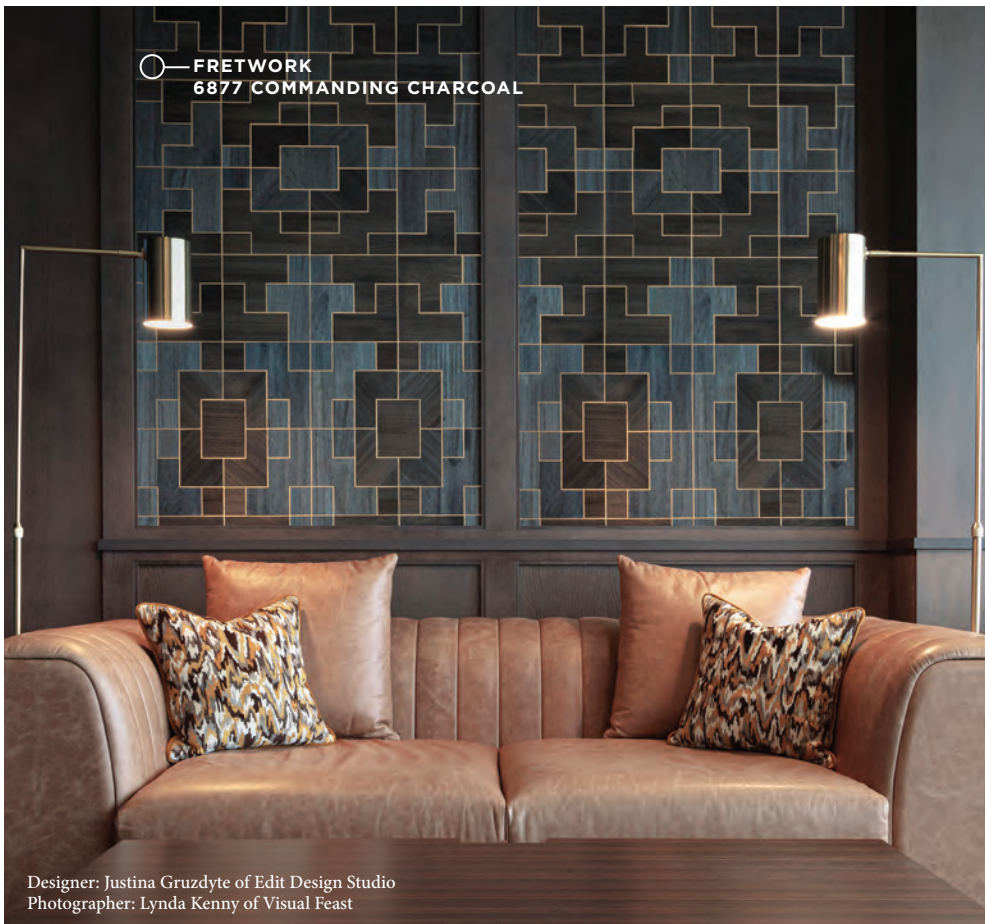


Wood Veneers have exceptionally consistent coloring for a natural product, which is why our mosaic designs are virtually seamless. These architectural wallcoverings make a statement on any surface and are the perfect alternative to custom paneling.



○ AGAINST THE GRAIN
4273 MIDNIGHT MARQUETRY

Designer: Jeff Schlarb Design Studio
Photographer: Aubrie Pick



○ FRETWORK
6877 COMMANDING CHARCOAL

Designer: Justina Gruzdyte of Edit Design Studio
Photographer: Lynda Kenny of Visual Feast



Scan or Click to
shop Wood Veneers





BLUR
7800 Multicolor

Designer: Christina Moore of Avenue Design Firm
Photographer: Vanessa Chavez of Realty Exposure Photography



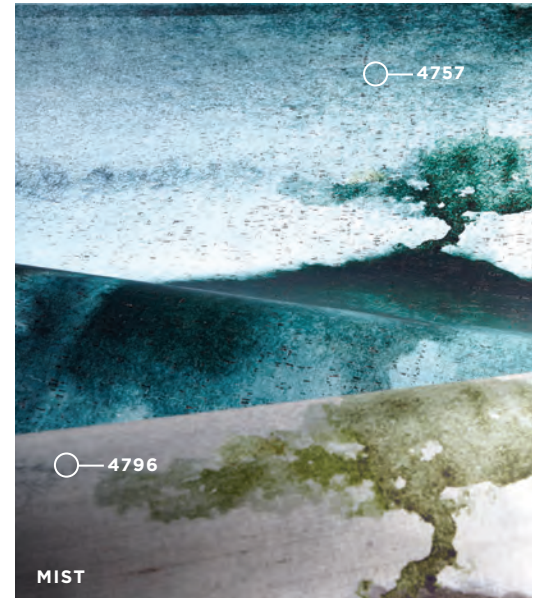
DIGITAL MURALS

IN FOCUS

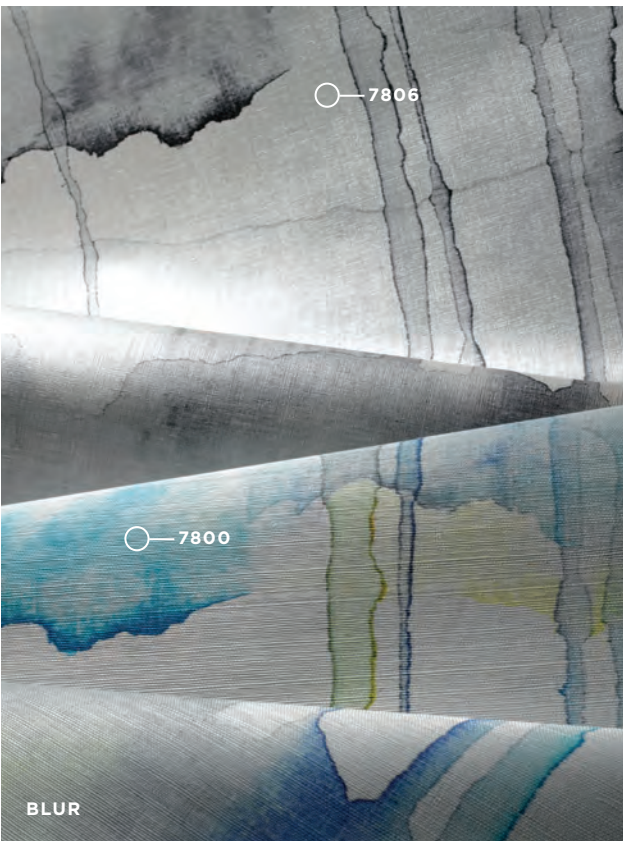
Our Digital Murals collection mixes artistry with technology. Original artwork is digitally printed on textured grounds such as grasscloths, traditional Japanese papers, and vinyls. This innovative concept allows one-of-a-kind designs to be interpreted on our most popular wallcoverings in a multitude of colors and hues. Our PJ Mash Up program allows you to choose from even more ground options. Coming soon, our newest customization program – Pure Imagination – will enable you to modify existing PJ designs, submit your own artwork, or work with us to create something completely new. There are more ways than ever to transform your walls into works of art.

IN FOCUS

DIGITAL MURALS



Digital Murals are known for their versatility. Designs range from classic motifs in refined neutrals to avant-garde patterns in dramatic colors. This is why they are the perfect complement to every design style. Produced in our New Jersey headquarters, they take just 1-2 weeks to produce. Now that's versatile.



PURE IMAGINATION

If you can imagine it, we can create it. Now you can design your very own one-of-a-kind digital wallcovering. Welcome to Pure Imagination...

PURE IMAGINATION

Design Your Own Digital

Creating your very own custom digital wallcovering is about to become a whole lot easier. Pure Imagination, a new custom design offering from Phillip Jeffries, launches in March. Want to customize an existing PJ digital mural? No problem! Have print-ready artwork that you want to use? Fantastic! Feel like collaborating with our in-house design team to create something completely unique? Tell us about your project!

Select from one of the options below to get started:



MODIFY

 our existing murals

Start with a PJ digital mural and customize it. Scale, crop, recolor, add elements or remove them – whatever you need for your project.

10-panel minimum | 25+ ground options



SUBMIT

 your own artwork

Start with your own print-ready artwork and have a digital wallcovering collection produced just for you.

4-panel minimum | 25+ ground options



CREATE

 your own design

Work with our in-house design studio to create and produce your very own custom digital wallcovering. Inspire us with images or concepts so we can bring your vision to life.

10-panel minimum | 25+ ground options

Just want to choose from our existing digital wallcovering collection and change the ground or color? Use our interactive tool at [PJMASHUP.COM](https://www.pjmashup.com).



○ BESPOKE
"MINERALS" DESIGN

○ SOHO HEMP
5282 BLUE AND GREY

Our design team collaborated with Rose Ink Workshop on is completely custom wallcovering for headboard walls. The mineral design was inspired by vintage mirrors and transformed to create this one-of-a-kind item.

PURE IMAGINATION

Design Your Own Digital

All PJ custom digital wallcoverings are designed and printed at our New Jersey headquarters. Our UV printers are the most environmentally friendly on the market and ensure your wallcoverings resist fading. Our certified technicians have over 25 years of experience with a wide array of techniques, from offset printing to laser technology. Our experienced design team, state-of-the-art production, and exceptional customer service make custom digital design easy.

Here's how you can create your own digital wallcovering in 3 easy steps:



1

INQUIRE

Download our inquiry sheet to get started. Once it's complete, submit it to:
custom@phillipjeffries.com



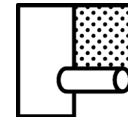
*Scan or Click
to get started*



DEVELOP

Send us your artwork, modification request, or inspiration for a new design. We develop the new artwork and provide a digital proof for approval. Need a strike off? No problem! Once that's approved, your work is done.

2



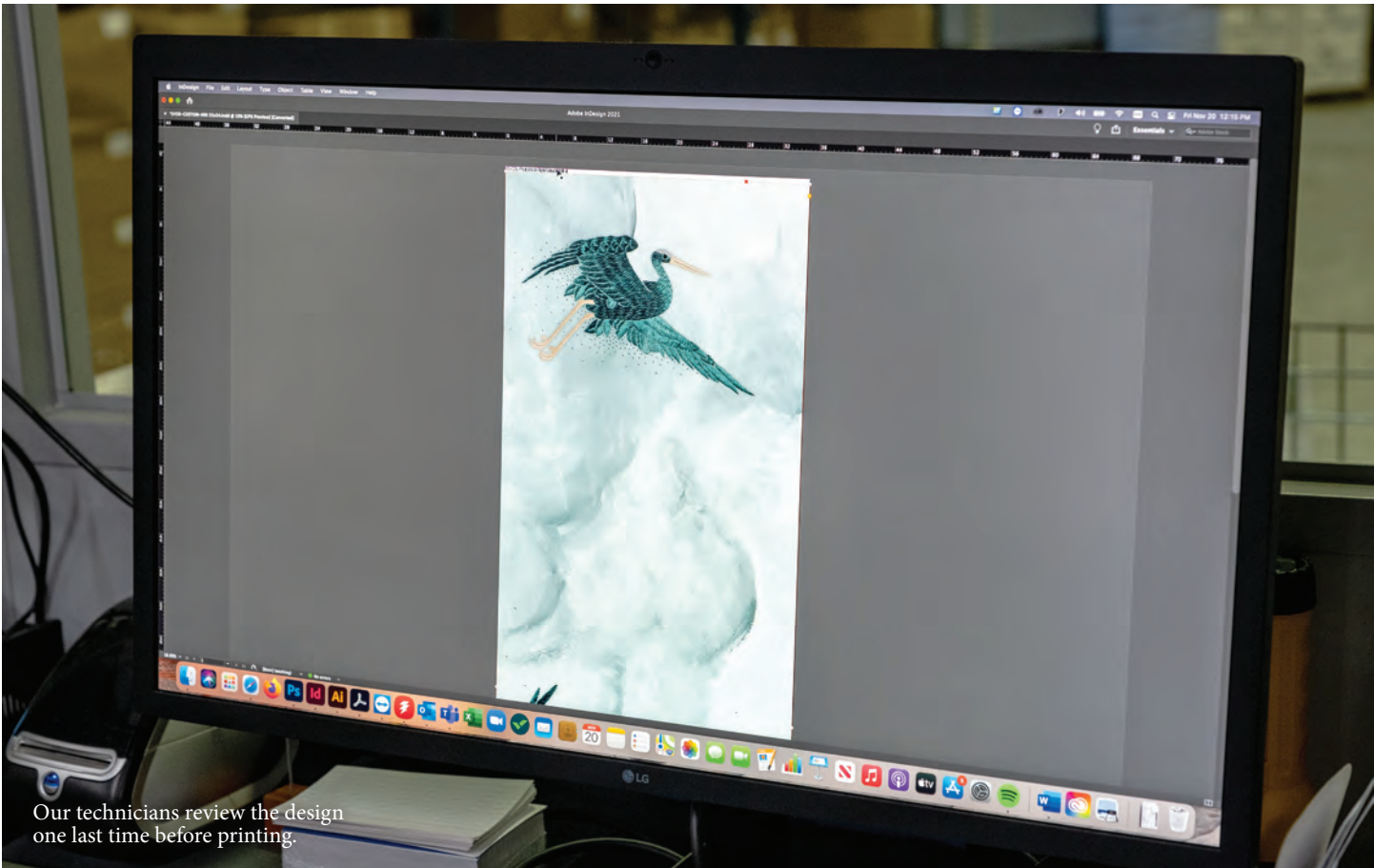
3

PRODUCE

All that's left to do is print your one-of-a-kind wallcovering. This will take 1-2 weeks once your artwork is approved.



All orders are meticulously inspected prior to shipping.



Our technicians review the design one last time before printing.



Orders print within 1-2 weeks after artwork is approved.



BETWEEN WALLS

featuring Megan Gorelick



Designer Megan Gorelick is best known for her signature coastal style. Based in Wilmington, Delaware, Megan has been spending her summers on the Jersey shore since childhood and the influence on her style is evident. While much of her work is local, her projects span the entire east coast.

"ALL BLUES PLAY NICELY TOGETHER"

Megan was the obvious choice to design the interiors of this spectacular beach front residence in Avalon, New Jersey. The inspiration for this modern, elegant retreat was the oceanside landscape of rolling dunes and gentle waves. Megan created a relaxed, modern vibe with white oak floors, lots of neutrals, and pops of blue. The custom millwork and sleek stone and tile were complemented with Phillip Jeffries wallcoverings. The result is absolutely breathtaking.



@megangorelickinteriors
megangorelickinteriors.com
Photography by Rachel McGinn Photography

HOUSE BEAUTIFUL

WHOLE HOME CONCEPT HOUSE

This year, the House Beautiful Whole Home Concept House seeks to reconnect us with nature. In its third installment, we are whisked away to Fox Hill, a custom home development in Franktown, Colorado. In addition to stunning mountain views, this eco-friendly community offers residents farm-to-table living in a luxurious environment just outside of Denver. House Beautiful partnered with local builder Nicholas Custom Homes to create a 5,400-square-foot house that combines natural living with comfort and style. Once the house was complete, 10 top design teams were selected to offer a fresh approach to each room. Phillip Jeffries was honored to work with 4 of these design teams: Lucinda Loya, Noz Design, Me + General Design, Andrea Schumacher, and Tiffany Brooks.



All Photography by Emily Minton Refield



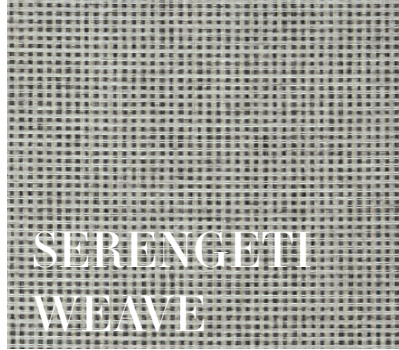
TREE HOUSE

DESIGNED BY: Andrea Schumacher

WALLCOVERING: Juicy Jute 4782

According to Denver-based designer Andrea Schumacher, dining rooms are often the least used room in a house. Which is why she wanted to create a space that people actually wanted to use. She looked for colors and materials that reflect the Colorado landscape. She was particularly drawn to evergreen colors and rich textures that seemed to invite the outside into the home. She selected a Phillip Jeffries wallcovering, Juicy Jute, for the ceiling because she felt it was a “fun grasscloth” that seemed “very Colorado.” No doubt this is one dining room that won't be overlooked.





SERENGETI
WEAVE



BLUR



SUNWASHED
LINEN



SCULPTED
WOOD



BOOMER SUITE

DESIGNED BY: Tiffany Brooks

WALLCOVERINGS: Sculpted Wood 2816, Serengeti Weave 6312, Sunwashed Linen 1595, Custom Blur (Mash Up - Blur Charcoal on Manila Hemp 5021 ground)

Chicago designer Tiffany Brooks knew she had her work cut out for her when she set out to design the perfect space for visiting parents. Recognizing that everyone would be best served if these visitors had an area of their own, she created a private suite with its own kitchen, living room, bedroom, and patio. The trick was to ensure it was private enough for the parents and stylish enough to be connected to the rest of the house. Having achieved both goals, there's only one question that remains – will they ever want to leave?



COLLAGE





GREAT ROOM & FOYER

DESIGNED BY: Lucinda Loya

WALLCOVERINGS: Collage 5040 and Vinyl Zebra wood 7872

Designer Lucinda Loya drew her inspiration for this project from the natural landscape. Her central concept of topography informed her approach to the space, emphasizing the third dimension – depth. She initially envisioned the great room to be more formal, but ultimately decided on a more cozy, casual vibe that she achieved through the use of texture and warm tones. Her vision for the great room was a multifunctional space that could be used as a comfy lounge, an entertaining area, and a home office. A Phillip Jeffries wallcovering, Collage, was selected because she felt it “offered a lot of movement very similar to the landscape.” For the foyer, she selected Vinyl Zebra wood to complement the geometric wood floors.



VINYL
ZEBRAWOOD



THE HANGOUT

DESIGNED BY: Noz Design
WALLCOVERING: Cape Town 6753

This vibrant, cozy space was designed to be a place for people to connect and converse. San Francisco-based designer Noz Nozawa was intent on encouraging board games over video games and ensuring everyone took a break from their phones. Influences from across the globe are evident in her design choices: traditional Japanese seating, Ghanaian-inspired stools, and African furnishings. With so many conversation starters, it would be impossible not to engage.



"I WANTED TO CREATE SPACES WHERE PEOPLE COME TOGETHER, LOOK AT ONE ANOTHER, AND ENGAGE IN CONVERSATION."





All Photography by Emily Minton Reifield



THE PLAYROOM

DESIGNED BY: Me + General Design
WALLCOVERING: Cape Town 6753

Now that we're working at home, we might as well be playing a home too. This quintessential adult playroom is the perfect place to escape with your pod. Brooklyn-based design duo Cristina Casañas-Judd and General Judd created a space where the party could go on for days. General was particularly excited about the bar - a place of function but also a place of comfort and connection. A Phillip Jeffries wallcovering, Cape Town, set the stage for this modern take on the Old West. According to Cristina, the wallcovering was going to be a "moment, an experience." They certainly created a moment to remember.



OASIS



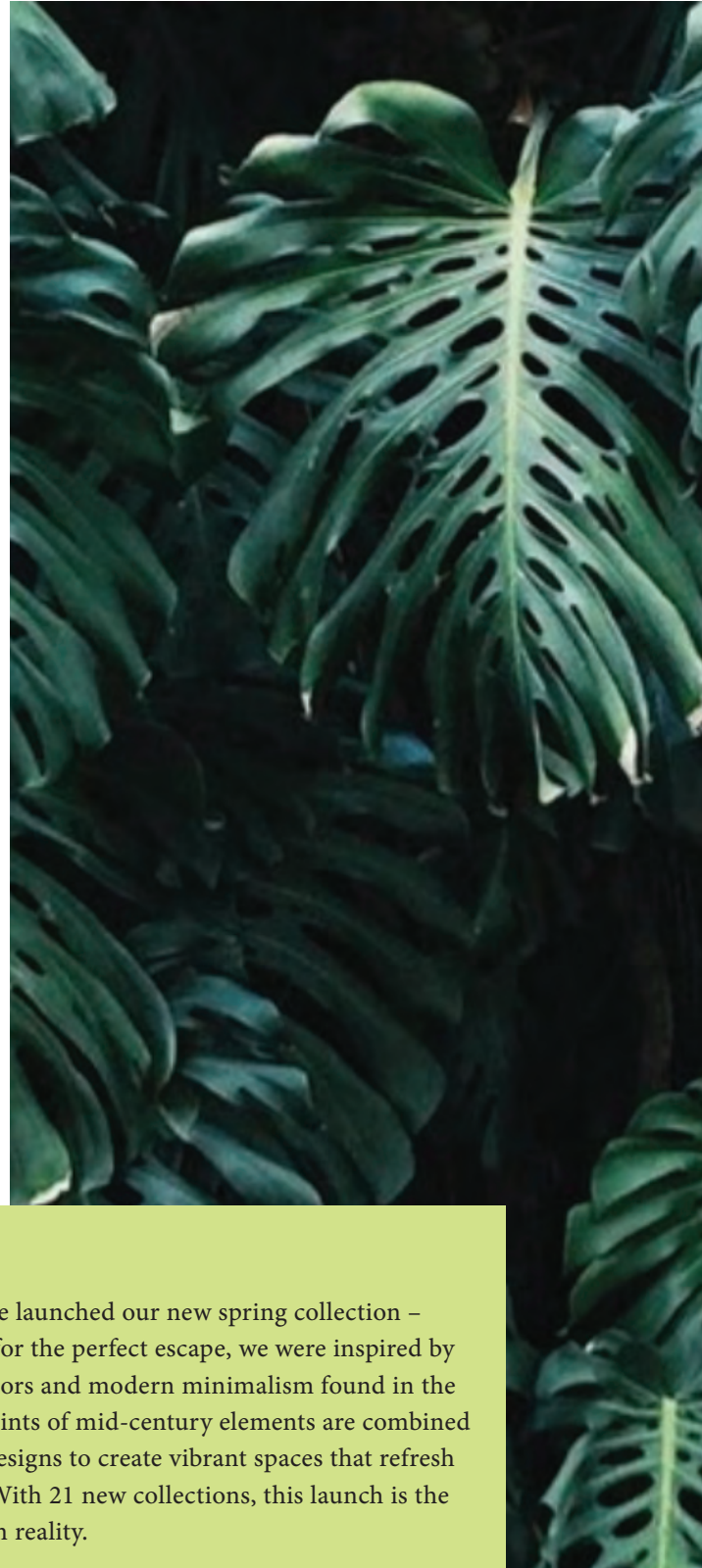
8694 Hushed Aqua
on Vinyl Washi



*Scan or Click
to shop
Spring 2021*

SPRING 2021

RESORT



This January we launched our new spring collection – Resort. Yearning for the perfect escape, we were inspired by the fresh, bold colors and modern minimalism found in the chicest retreats. Hints of mid-century elements are combined with traditional designs to create vibrant spaces that refresh and re-energize. With 21 new collections, this launch is the perfect break from reality.



ARROWROOT INLAY



Arrowroot is handwoven on a loom, using an abundance of fibers to ensure consistent color and depth. This technique gives the look of raw silk and natural grass. Artisans take great care in the lamination and coloring process. Natural arrowroot is harvested in the spring to ensure the dye endures. Once woven and dyed, arrowroot is then cut into geometric shapes and hand laid into a large-scale inlay design. Our Luxe Naturals collection features distinctive dimensional designs artistically crafted from natural materials.

BREEZE BLOCK



Authentic pulp paper is hand picked by artisans and given a spray of color. Organic floral shapes are then hand cut and their petal edges delicately painted. A stencil of the pattern is painted on the ground material and the floral shapes are carefully hand laid to create the design. Once this process is complete, the material is laminated to perfection and ready for your walls.





○ — 8710 CRISP GREY

*THIS TIME-INTENSIVE
PROCESS CREATES THE
LOOK OF CONCRETE
BREEZE BLOCK
WITH CLASSIC AND
COASTAL APPEAL.*

DESERT DUNES

○ 8047 RIVERSIDE NAVY

*A MULTI-STEP
PROCESS OF PLASTER
LAYERING, VERTICAL
STRIPE APPLICATION,
AND COLOR WASHES
CREATE TEXTURAL
WONDER FROM EDGE
TO EDGE.*

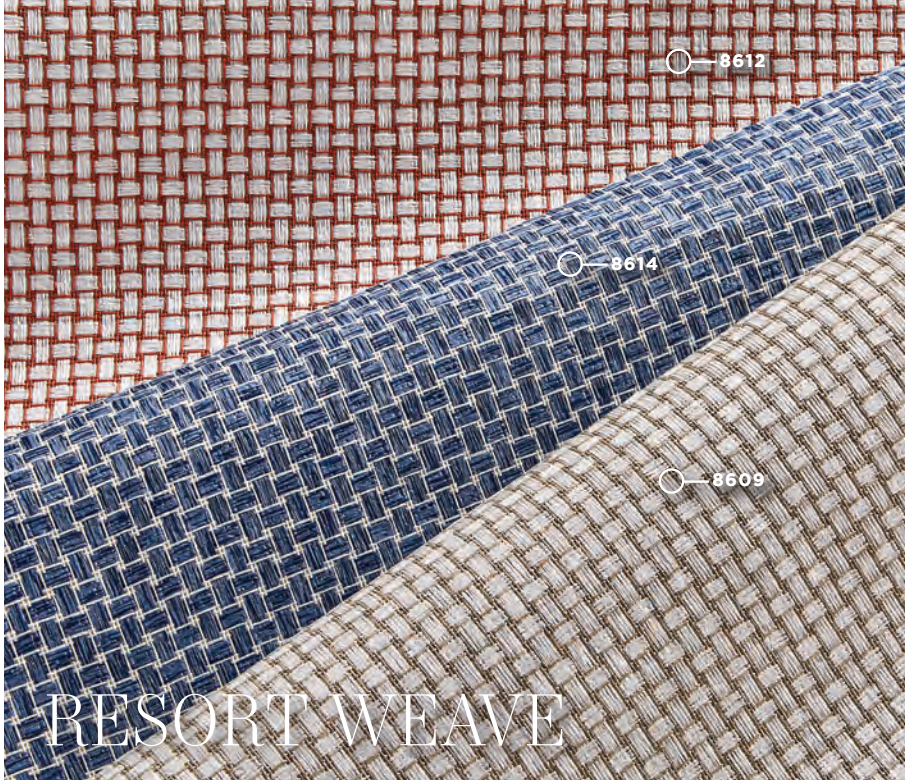
THE GROVE



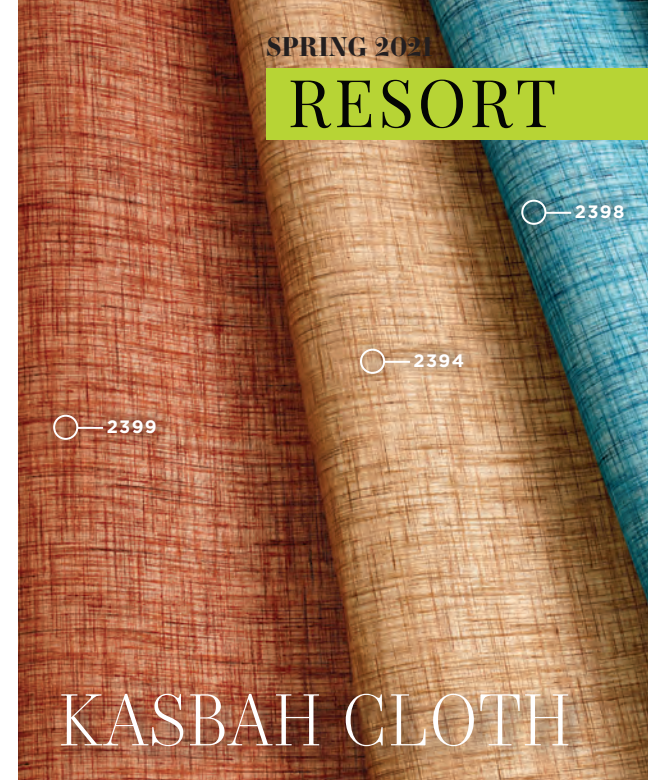
The finest wood veneer is hand selected by artisans and given a wash of color. These materials are then laminated onto gold or silver grounds, pressed, and trimmed. An innovative laser-etching technique is used to create a tropical grove pattern.







RESORT WEAWE



SPRING 2021

RESORT

KASBAH CLOTH



PREPPY PLAID

8688 Clad Charcoal

RESORT



MIRAGE

8732 Blue Apparition
on Vinyl Washi



○—8715

○—8721

○—8717

○—8720

VINYL PLASTERED



○—8697

○—8700

○—8705

○—8699

VINYL VIBRATIONS



VINYL
TAILORED LINENS

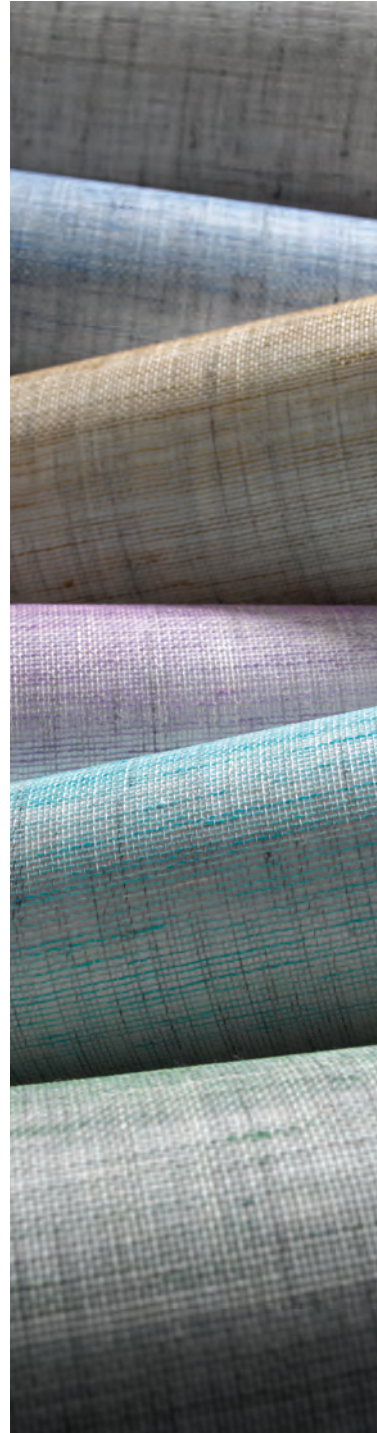


VINYL
BUNGALOW WEAVE
8675 Turquoise Splash



VINYL
HEMPS & GRASSES

PJ CATEGORIES



NATURALS

The largest selection of natural handcrafted wallcovering.

PG. 54

SEAMLESS

Handcrafted natural paperweaves are virtually seamless.

PG. 58

TEXTILES

Fine fabrics add warmth and subtle texture to your walls.

PG. 62

SPECIALTY

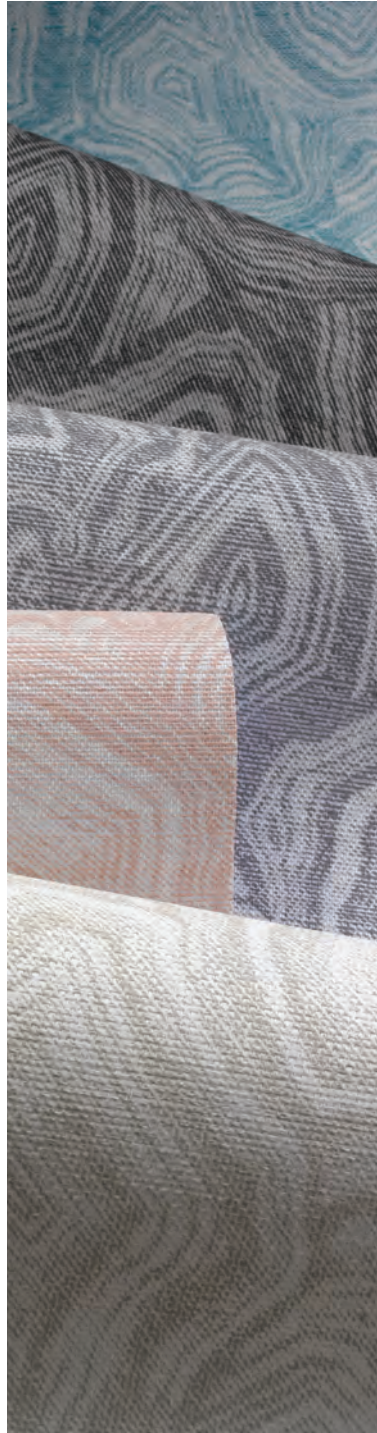
One-of-a-kind, multi-layer designs handcrafted by artisans.

PG. 66



DIGITALS 

Authentic artwork translated into murals for your walls.
PG. 70



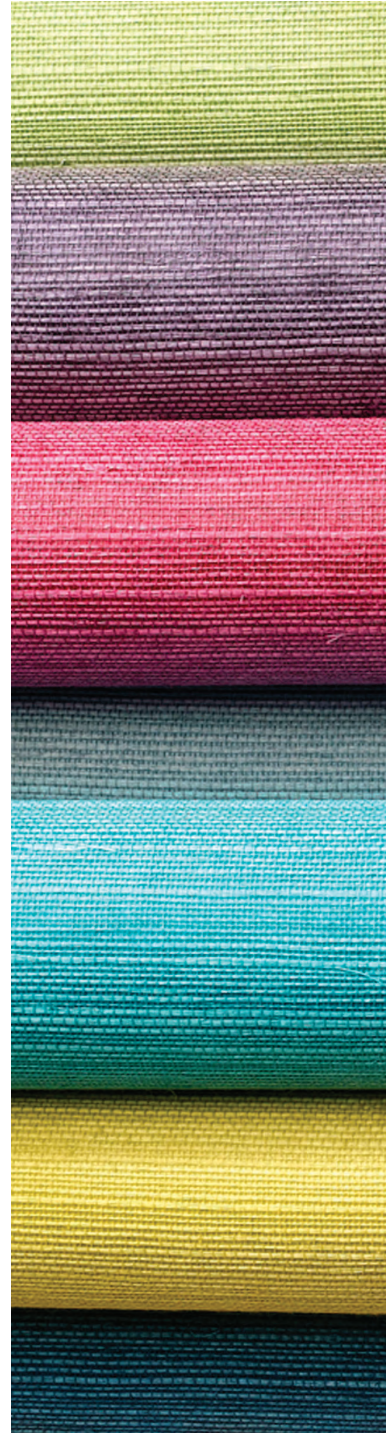
PRINTS 

Bold, graphic designs on a variety of grounds.
PG. 74



VINYLS 

Performance wallcovering that looks and feels like our naturals.
PG. 78



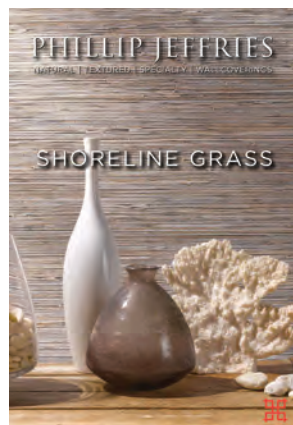
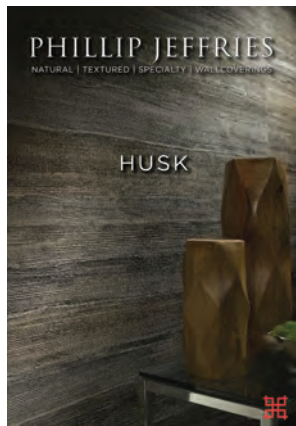
COLOR SOURCE 

The full spectrum of color at your fingertips.
PG. 82



HOUSE OF NATURALS

Scan or Click
to explore more
natural collections





Designer: Megan Gorelick Interiors
 Photographer: Rachel McGinn Photography

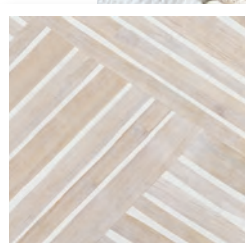


EXTRA FINE
 ARROWROOT
 3841

NATURALS

Not all grasscloths are created equal. Ours are handcrafted by artisans using only the finest materials and meticulously laminated at our mill in Japan. Our unparalleled inspection process ensures exceptional quality.

Founded more than 40 years ago with just 10 grasscloths in a garage, Phillip Jeffries is now considered the ultimate source for natural wallcovering. Our range of naturals is unmatched, with more than 500 hems, raffias, arrowroots, jutes and a variety of other natural grasses. From the very finest of hems to the textural drama of handwoven raffias and grasses, we have the perfect texture in a variety of colors to enhance any space.



CAPE TOWN
 6730

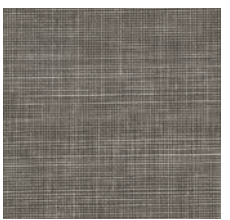
Designer: Eileen Lane Design
 Photographer: Eileen Lane Kennedy



Designer: Marguerite Rodgers Interior Design
Photographer: © Halkin | Mason Photography LLC

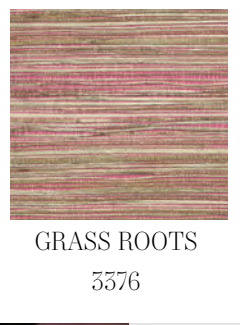


ISLAND RAFFIA
1746



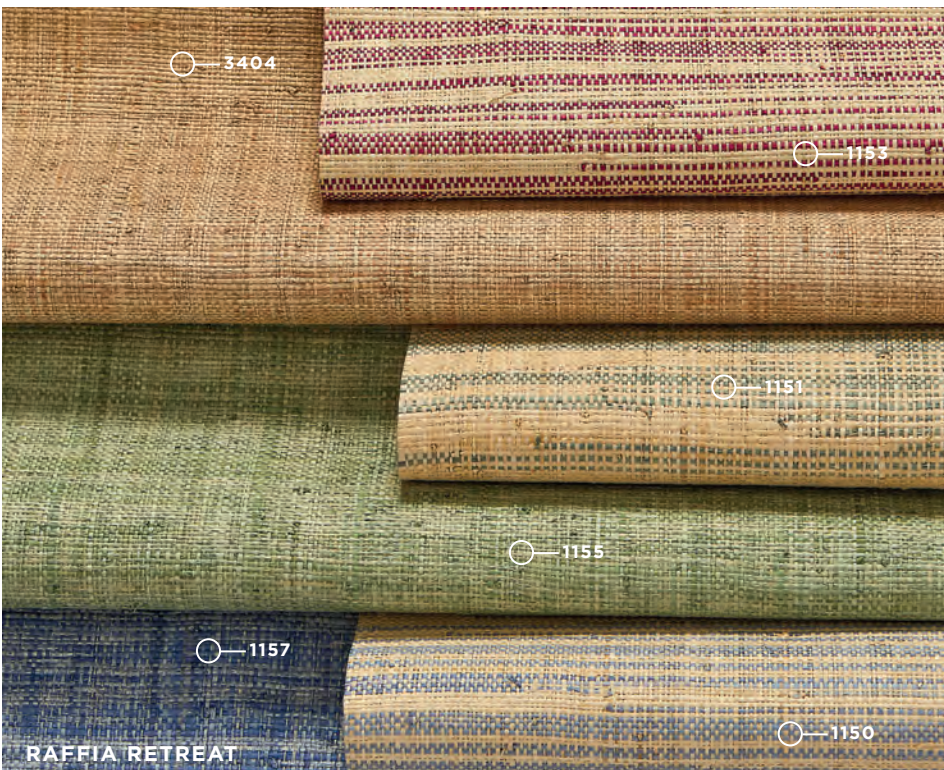
MANILA HEMP
3445

Designer: Sabbe Interior Design
Photographer: Michael J Lee



GRASS ROOTS
3576

Designer: Denise McGaha Interiors
Photographer: Nathan Schroder Photography



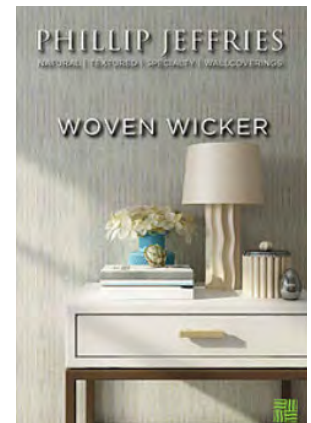
THE PHILLIP JEFFRIES DIFFERENCE

- Largest Selection
- Widest Range of Colors
- Most Consistent Color and Texture
- Finest Raw Materials
- Highest Thread Count
- Expert Lamination
- In Stock and Ready to Ship
- Fastest Delivery



SIMPLY SEAMLESS

Scan or Click to explore more paperweave collections





Designer: Trilbey Gordon Interiors
 Photographer: Courtesy of Trilbey Gordon Interiors

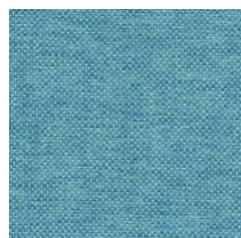


SEVILLA WEAVES
 1795

PAPERWEAVES

Handcrafted natural paper is dyed prior to weaving to create a virtually seamless wallcovering. Expert lamination at our mill in Japan and a rigorous inspection process ensure ease of installation and exceptional durability.

The art of paper weaving began centuries ago in Japan. This ancient craft is still practiced today by artisans throughout the world. Paperweaves are perfect for someone who loves the look of a natural but not the paneling that may come with it. All of our paperweaves are yarn dyed, which means less variance in color. Almost 400 options in a wide array of designs are in stock at our New Jersey warehouse and ready to ship.



CHROMATIC
 3324

Designer: I Create Design Studio
 Photographer: Courtesy of I Create Design Studio

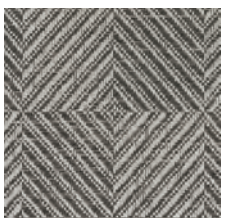


Designer: Yael Weiss
Photographer: Nicole Cohen



ALL WOUND UP

3575



DIAMOND
WEAVE
4449

Designer: Hibou Design and Company
Photographer: ©Drew Hadley, All Rights Reserved.



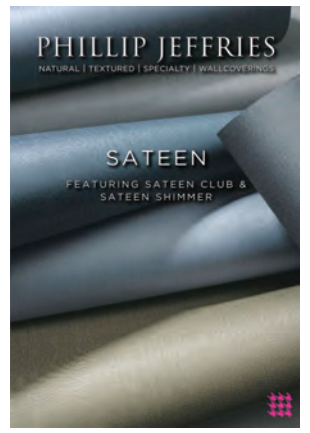
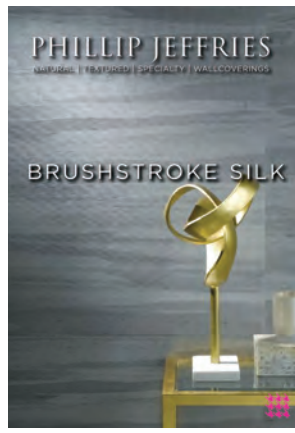
DRIFTWOOD
6204

Designer: Elms Interior Design
Photographer: Michael J Lee



THE PHILLIP JEFFRIES DIFFERENCE

- Largest Selection
- Widest Range of Designs
- No Shading or Paneling
- Expert Lamination
- In Stock and Ready to Ship
- Fastest Delivery



TAILORED WALLS



Scan or Click
to explore more
textile collections





Designer: Elms Interior Design
 Photographer: Michael J Lee

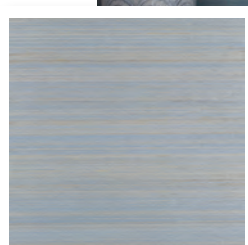


STAR DUST SILK
 3221

TEXTILES

Textiles add a sense of warmth and subtle texture to any space. Our textile wallcoverings are meticulously laminated and treated with anti-fray and stain repellency finishes to ensure ease of installation and exceptional durability.

Textile wall hangings were the predecessors of wallcoverings. Historically, tapestries were hung on the walls for insulation while modern-day wallcoverings are used in a more decorative fashion. It's no surprise that the earliest and most consistent influence on wallcovering design comes from textiles. From fine silk and linen to chunky knits, woolen tweeds and suede, we have the widest array of styles to choose from, most of them in stock and ready to ship.



SILK & ABACA
 3263

Designer: Lisa Schiller and Kim Beynon of
 Schiller Beynon Interior Design
 Photographer: James Robinson

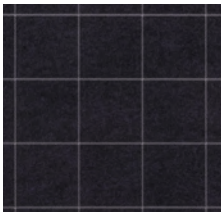


Designer: Timothy Godbold Ltd
Photographer: Alec Hemmer



SUEDE LOUNGE

4333



SAVILE SUITING

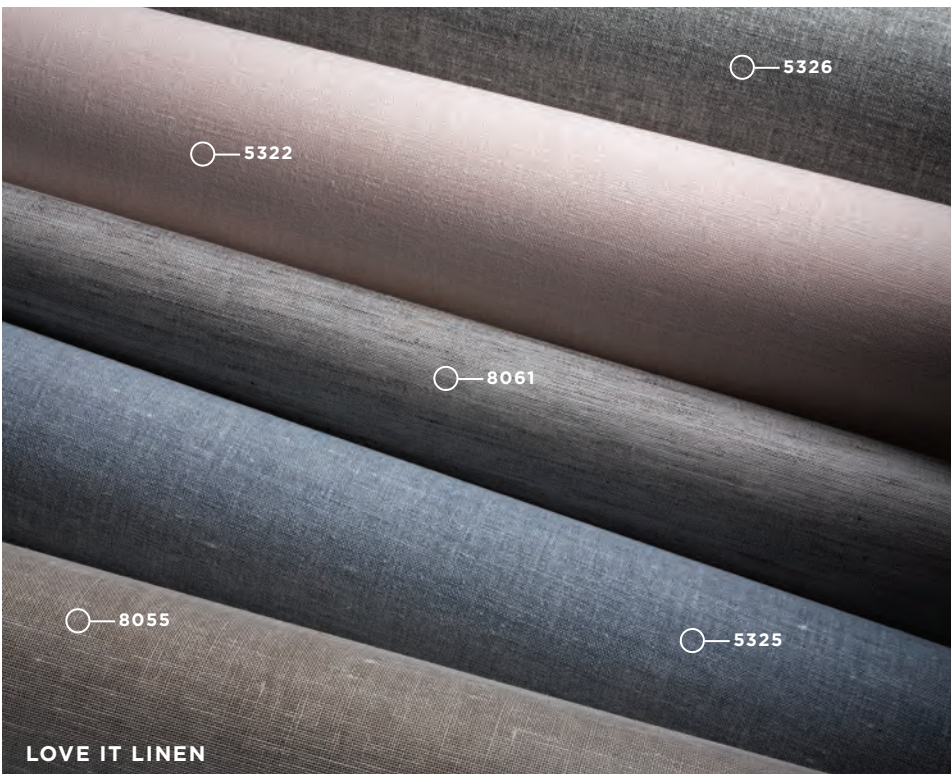
4475

Designer: Belle Vie
Photographer: Open Homes Photography



HORSEHAIR
3257

Designer: James Thomas LLC
Photographer: Richard Powers



5322

5326

8061

8055

5325

LOVE IT LINEN

THE PHILLIP JEFFRIES DIFFERENCE

Widest Range of Styles

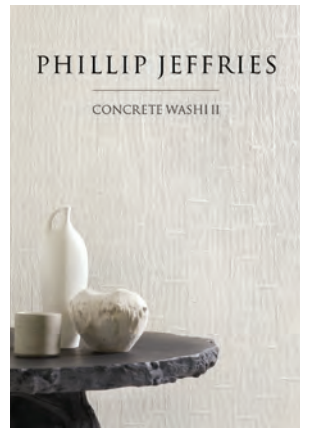
Expert Lamination

Stain Repellency

Anti-Fray Treatment

Most are In Stock and Ready to Ship

Fastest Delivery



ARTISANS GUILD

Scan or Click
to explore more
specialty collections





Designer: Libby Interiors
 Photographer: Janis Nicolay

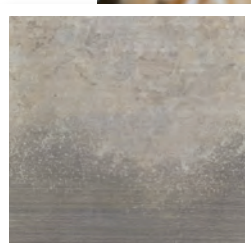


PALAZZO
 5462

SPECIALTY

Our passion for handcrafting is on display in this collection of exquisite artisanal wallcoverings. Step by meticulous step, artisans create works-of-art for your walls.

Handcrafted paper, metallic leaf, wood veneer, color wash, and unique relief are hallmarks of this collection. Expert hands wield the tools of the trade - brushes, combs, chopsticks - to create these unique textures. Want something custom? Our PJ Mash Up program allows you to create your own one-of-a-kind wallcovering. Select specialty items are available for customization.



METALLIC OMBRÉ
 3162

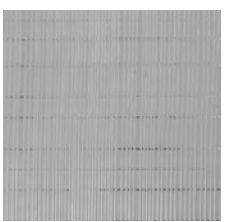
Designer: Ramsin Khachi of Khachi Design + Build
 Photographer: Carole & Roy Timm Photography



Designer: Pamela Durkin Designs, LLC
Photographer: ©Blaine Johnathan Photography

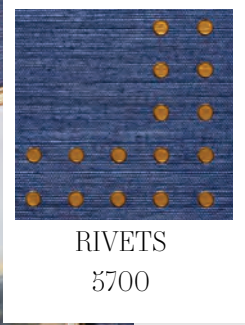


YACHT CLUB
4296



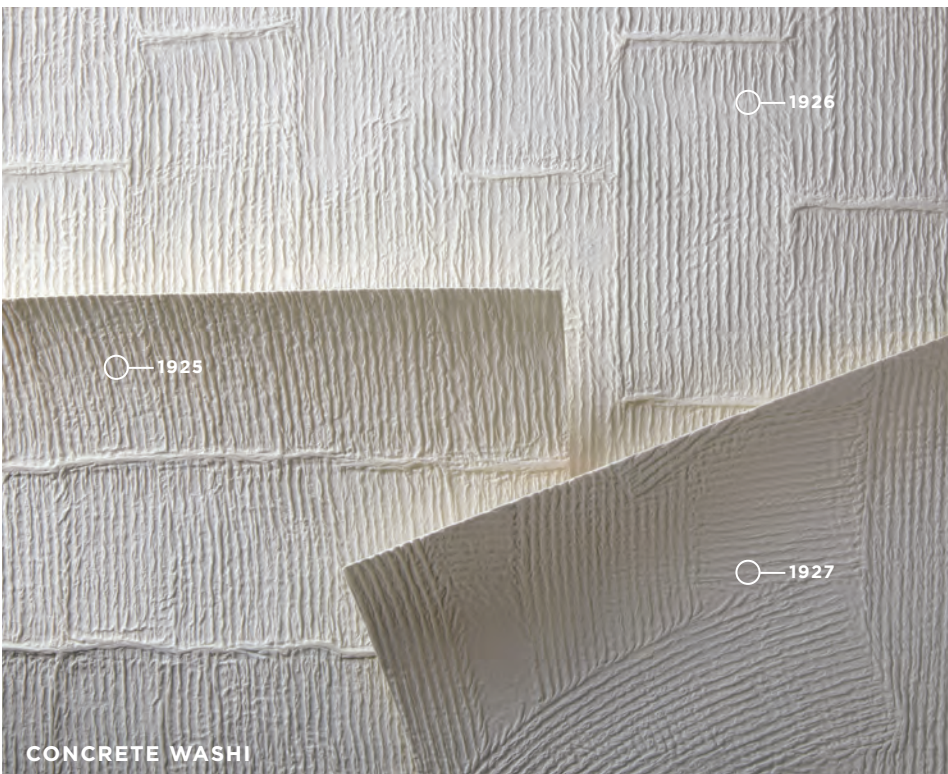
TINSELTOWN
5791

Designer: Jean-Louis Deniot
Photographer: Jonny Valiant



RIVETS
5700

Designer: Rachel Reider Interiors
Photographer: Read McKendree / JBSA



THE PHILLIP JEFFRIES DIFFERENCE
Handcrafted by Artisans
One-of-a-Kind Textures
Special Finishes

CONCRETE WASH



DIGITAL MURALS

Scan or Click
to explore more
digital collections





Designer: Beyond Beige Interiors
 Photographer: Provoke Studios

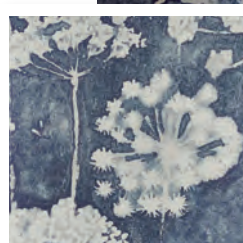


BEYOND
 7201

DIGITALS

Authentic artwork is translated across a series of panels to turn your wall into a canvas. This innovative concept combines original, handmade artwork with our most popular wallcoverings.

We offer a variety of designs with a diverse subject matter that make great conversation pieces for residential and public spaces. What starts as a small, hand painted piece of artwork becomes a much larger mural. The high quality of our imagery is what sets this program apart. Want something custom? Our PJ Mash Up program allows you to customize your own one-of-a-kind wallcovering. Choose from a selection of grounds for any of our digital designs. Coming soon, our newest customization program – Pure Imagination – will enable you to modify existing PJ designs, submit your own artwork, or work with us to create something completely new.



WISH
 6103

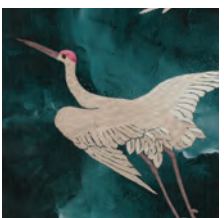
Designer: Alder and Tweed
 Photographer: Doug Burke



Designer: Studio Squire
Photographer: Katie Thyken



FADE
7226



FLIGHT
7036

Designer: Nishi Interiors
Photographer: Demargot Photography

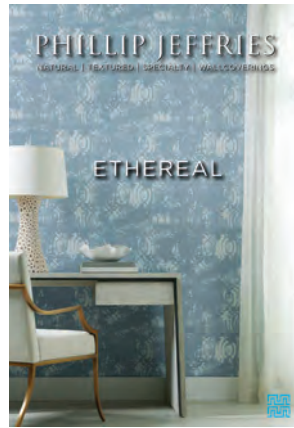
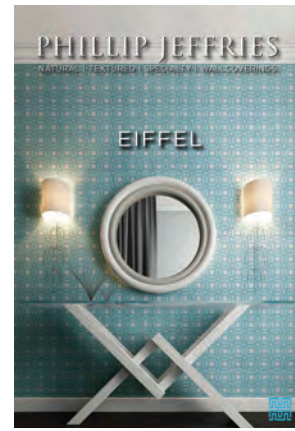


BLOSSOM
6402

Designer: Betsy Wentz Interior Design
Photographer: Caulin Grant Photography

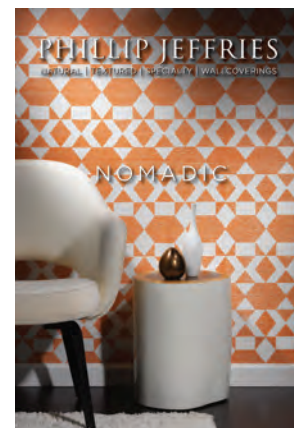


THE PHILLIP JEFFRIES DIFFERENCE
 High Tech Digital Printing
 Multitude of Colors and Hues
 Printed on a Variety of Grounds
 Custom Capabilities
 No Measurements or Elevations Needed
 Short Lead Time
 Mural Effect



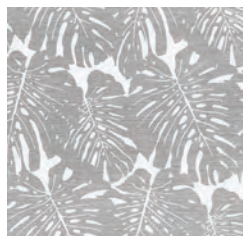
PJ PRINTS

Scan or Click
to explore more
print collections





Designer: Nikki Levy Interiors
 Photographer: Joey Duhon

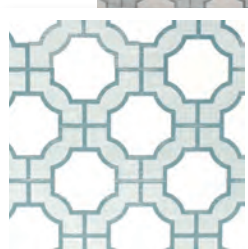


JACK'S JUNGLE
 5359

PRINTS

A unique series of boldly scaled designs are hand printed by artisans on a selection of natural and vinyl wallcoverings. This innovative concept combines original, high quality printed artwork with our most popular wallcoverings.

From classic to contemporary, literal to abstract, small to large scale – there's a print for every purpose in a vast array of colors. Want something custom? Our PJ Mash Up program allows you to customize your own one-of-a-kind wallcovering. Create any of our print designs in the color of your choosing.

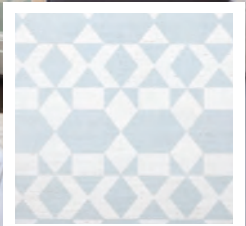


IMPERIAL GATES
 5192

Designer: Foxtail Interiors
 Photographer: Emily Followill Photography



Designer: Lindsay Rhodes
Photographer: Alyssa Rosenheck



NOMADIC
6182



TULU CLOTH
8438

Designer: Alder and Tweed
Photographer: Rochelle Jahdi



AGATE
5950

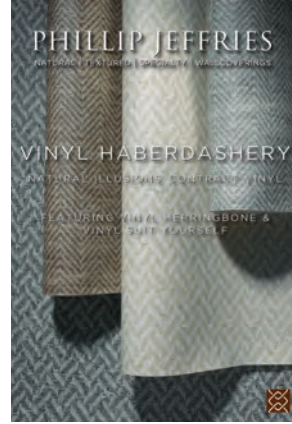
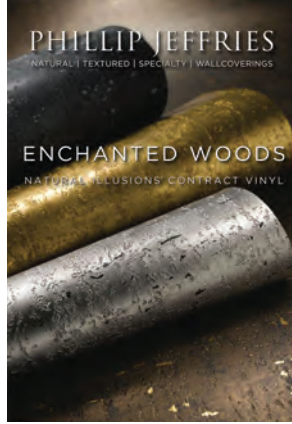
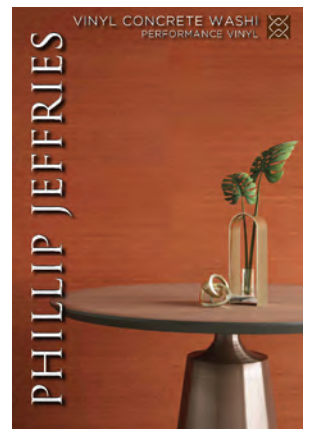
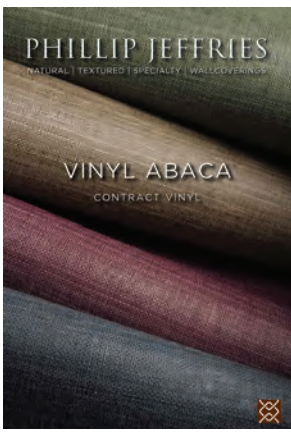
Designer: Sara Crooks Design
Photographer: Stephen Karlisch



THE PHILLIP JEFFRIES DIFFERENCE

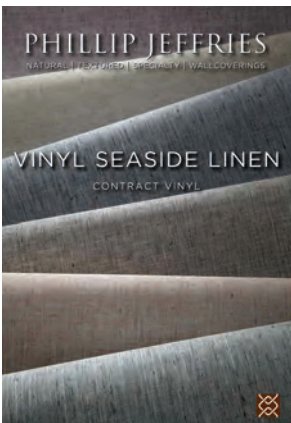
- Handcrafted by Artisans
- Hand Painted / Stenciled Look
- Graphic Patterns
- Unexpected Colors
- Printed on a Variety of Grounds
- Custom Capabilities

PREPPY PLAID



PERFORMANCE VINYL

Scan or Click to explore more vinyl collections





VINYL
ZEBRAWOOD
7872

VINYLS

Our performance vinyl collection is developed to reproduce the look and feel of our handcrafted natural wallcoverings. These Type II performance vinyls merge luxury design with durability and affordability.

Phillip Jeffries award-winning designs are now engineered for residential and commercial use. These durable, washable wallcoverings can be used in high-traffic and damp areas. Choose from our expansive collection or create your very own one-of-a-kind wallcovering.



VINYL WOVEN
SISAL
8127

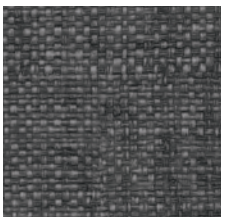
Designer: Double Knot Home
Photographer: Copyright 2020 Marshall Evan



Designer: Leo A Daly - Dallas
Project: Grand Hyatt Vail



VINYL ENCHANTED
WOODS
7251



VINYL MADAGASCAR
RAFFIA
7869

Designer: Shelley and Company
Photographer: David Duncan Livingston



VINYL SILK
& ABACA
8097

Designer: Zia Interiors
Photographer: Manny Sanchez Photography



VINYL SEASIDE LINEN

THE PHILLIP JEFFRIES DIFFERENCE

- Type II Contract Grade Vinyl
- Highly Durable and Washable
- Custom Design Capabilities
- Contract Grade Backing
- Class A Fire Rating
- Anti-Microbial
- Low VOC
- Competitive Pricing



COLOR SOURCE

SPECTRUM

An array of colors and textures is at your fingertips in our Spectrum series. Curated selections of natural, textured and specialty wallcoverings are organized by color. Explore the ultimate color source for designers. More than 500 items in our collection are included, many of them in stock and ready to ship.

*Scan or Click to explore
color source collections*



BEFORE & AFTER

Designer Francis Toumbakaris, founder of Francis Interiors, believes that “inspiration comes from listening.” His client, a busy executive who made a bold decision to move to New York City from San Francisco, wanted to reimagine her new residence in a converted late 19th century printing warehouse. This 2,400 square foot quintessential New York City apartment was completely transformed in less than four months. Both Francis and his client are thrilled with the result.



WILDFLOWERS
8505



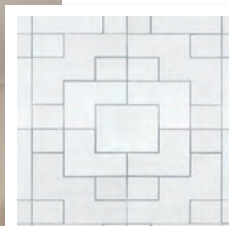
Wildflowers would set the stage for the girly, upscale vibe with a boutique hotel feel they were hoping to achieve in the master bedroom.



GAUCHO CLOTH
1028



In the den, Francis was hoping to find a wallcovering that felt like upholstery. He also wanted to slice the room horizontally. When he saw Gaucho Cloth, he screamed.



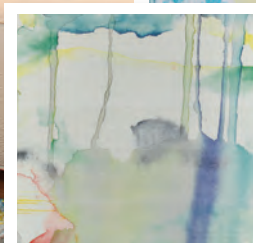
FRETWORK
6870

Fretwork was the perfect choice for the geometric theme planned for the living room.



"THE ARCHITECTURAL AND DECORATIVE LIGHTING DESIGN, CUSTOM MILLWORK AND BESPOKE FURNISHINGS AND FINISHES TELL A UNIQUE STORY OF MY CLIENT'S JOURNEY FROM SAN FRANCISCO TO NEW YORK."

LAST IMPRESSION



BLUR
7800

Designer: Revamp Interior Design
Photographer: Will Ellis Photography
@revampnyc
revampinteriordesign.com

Danielle Fennoy, founder of Revamp, delights in “finding a space’s hidden beauty and infusing it with splashes of color, bundles of light and the irreplaceable personality that every unique client brings to the mix.” This Connecticut powder room epitomizes her design philosophy. Danielle and her client selected the wallcovering together, opting for Blur Multicolor on Marshmallow Manila Hemp. According to Danielle, “It was love at first sight and she had to have it.” We feel the same way about this stunning powder room.

PJ CONTRACT

PHILLIP JEFFRIES



MIRAGE

8729 Daydream Blue

PHILLIPJEFFRIES.COM/OASIS

THE DOR

Spring 2021



PHILLIP JEFFRIES