



Goodrich Global  
SINCE 1983

zintracoustic.com

**zintrac<sup>®</sup>**  
**PRINT**



Zintra Print offers a wide range of colors, curated designs, and custom edge banding. The simple process, fast turnaround, and low minimum order quantity mean it's never been easier to create unique, sustainable, noise reducing spaces.



Design **Autumn Forest**  
Artist **Fritz Rumpf** | Substrate **Zintra Frost**  
2. Application **Floor to Ceiling Screens**



**Zintra acoustic panels reduce noise by absorbing sound. They're ideal for creating design-driven interior spaces.**

Available in a wide range of colors and designs, Zintra can be used in a variety of applications at an affordable price.



**Effective sound absorption**



**Easily printable**



**Simple fabrication**



**Straightforward installation**



**Joint-free application**

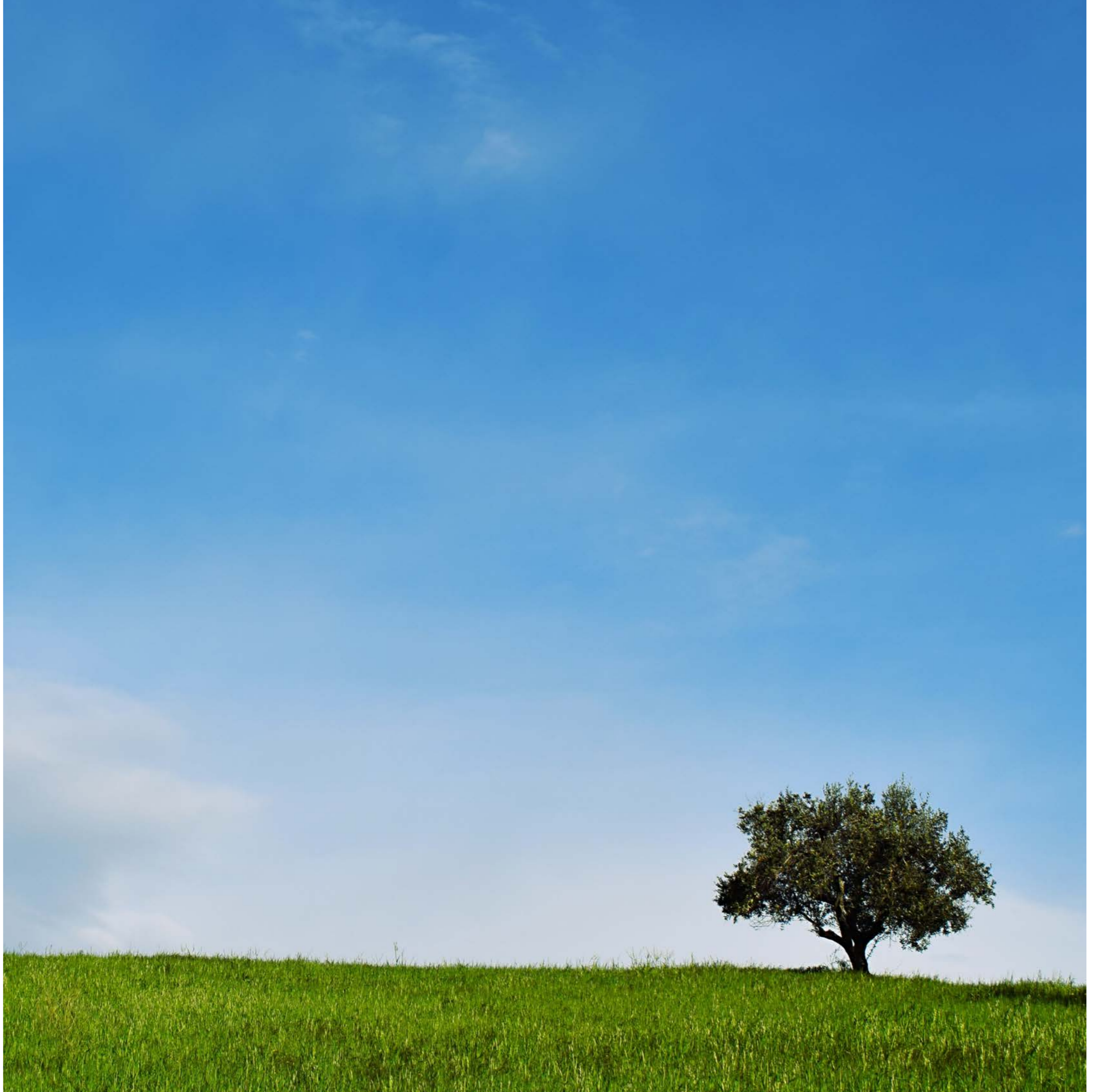


**Uniform color through the panel**



**Made from sustainable materials**

For technical specifications see page 24



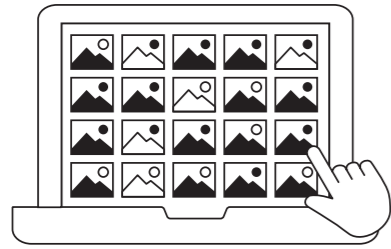




6. Design Gumnuts | Color Retro | Substrate Zintra Smoke | Application Wall Panels

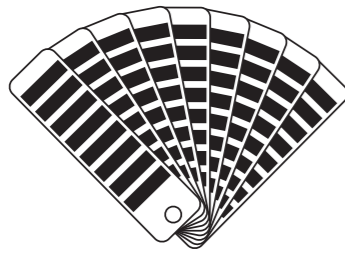


# Zintra Print Art



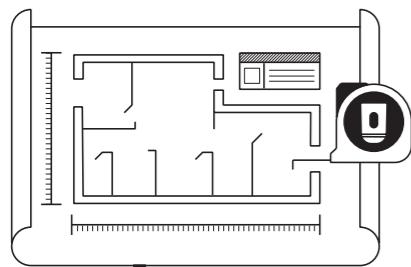
## 1. Choose your Design

125 curated designs in multiple colorways are provided as the inspiration to print on your chosen base color. The Materials range includes Timber, Metals, Stone and Concrete, while the Artwork range incorporates Abstract, Botanical and Geometric designs. In addition, we have partnered with internationally renowned artists to provide unique content for your space.



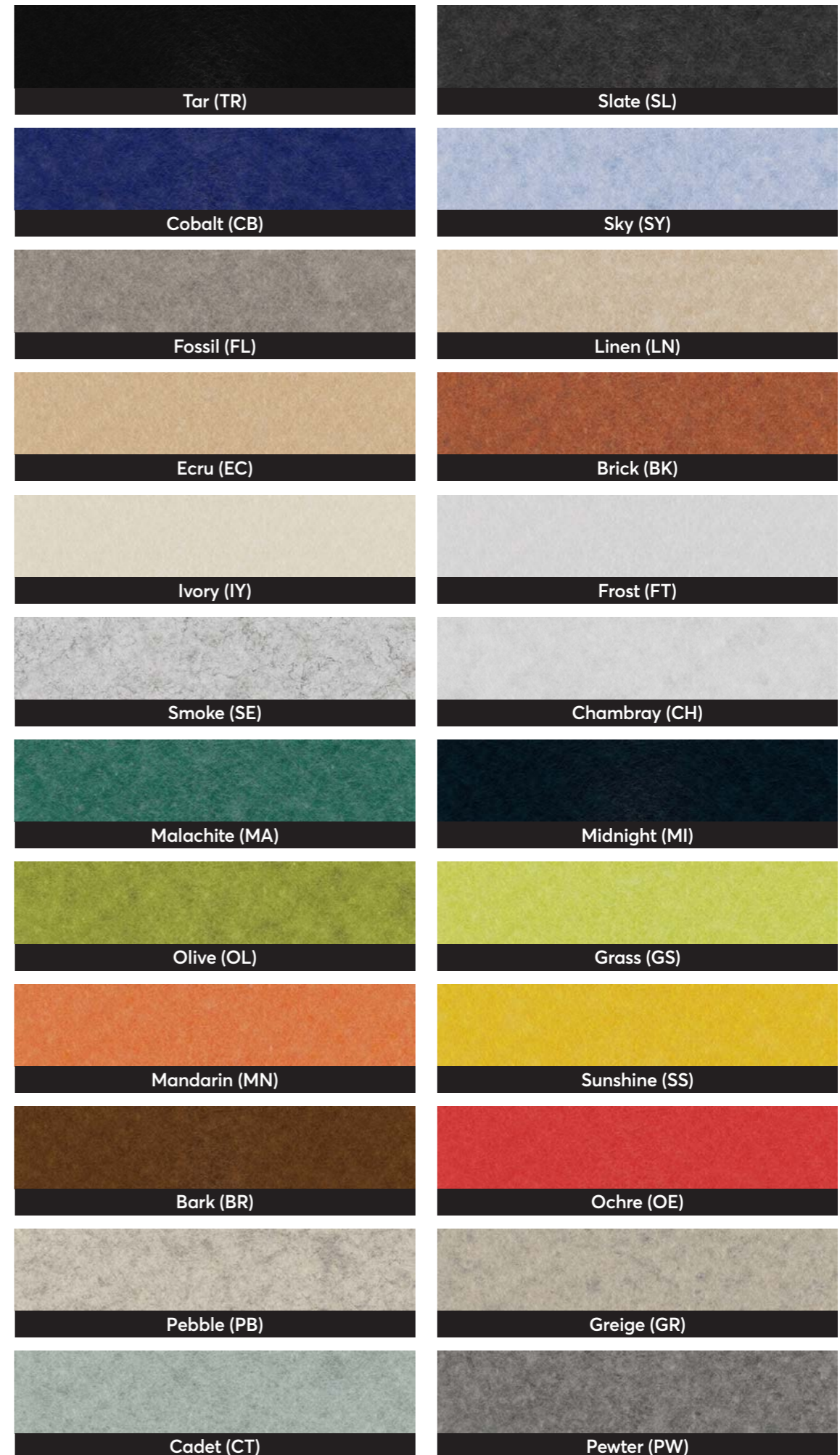
## 2. Choose your Base

Print onto the entire Zintra Acoustic 1/2" (24 colors) and 1" (6 colors) panel range. While the color of the Zintra base will impact the color of the print, it's easy to print a layer of white before the color layer to deliver color accuracy.



## 3. Define your Space

The Zintra Print offer is made to order to suit your project. Provide us with the sizing and layout required to specifically fit your space and the Zintra Print panels will be provided to size, ready for install.







10. Design In to the Light | Artist Fritz Rumpf | Substrate Zintra Frost | Application Wall Panels





12. Design French Linen | Color Duck Egg | Substrate Zintra Frost | Application Wall Panels



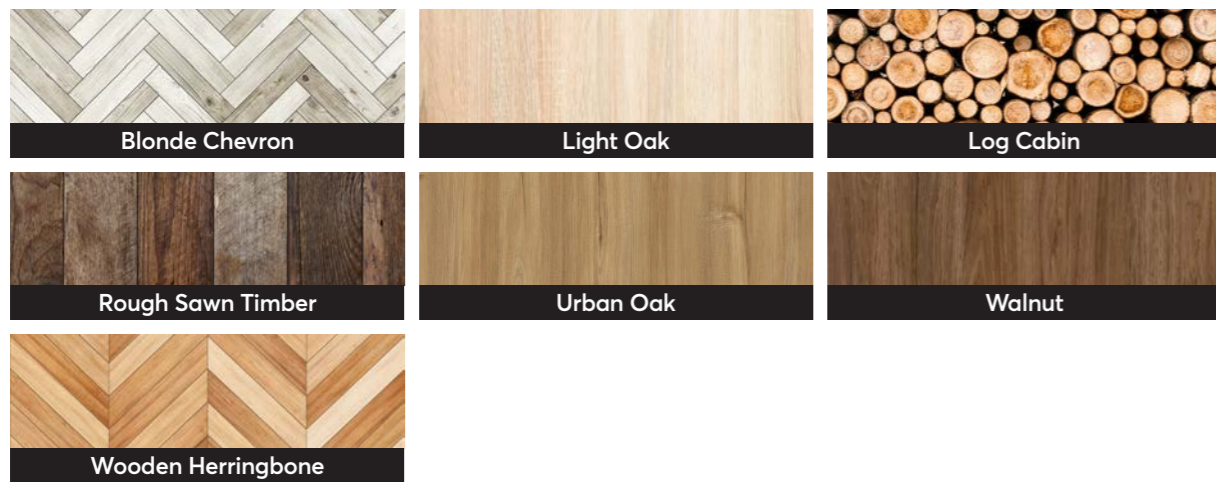
# Zintra Print Art Library

125 curated designs in a variety of colorways.

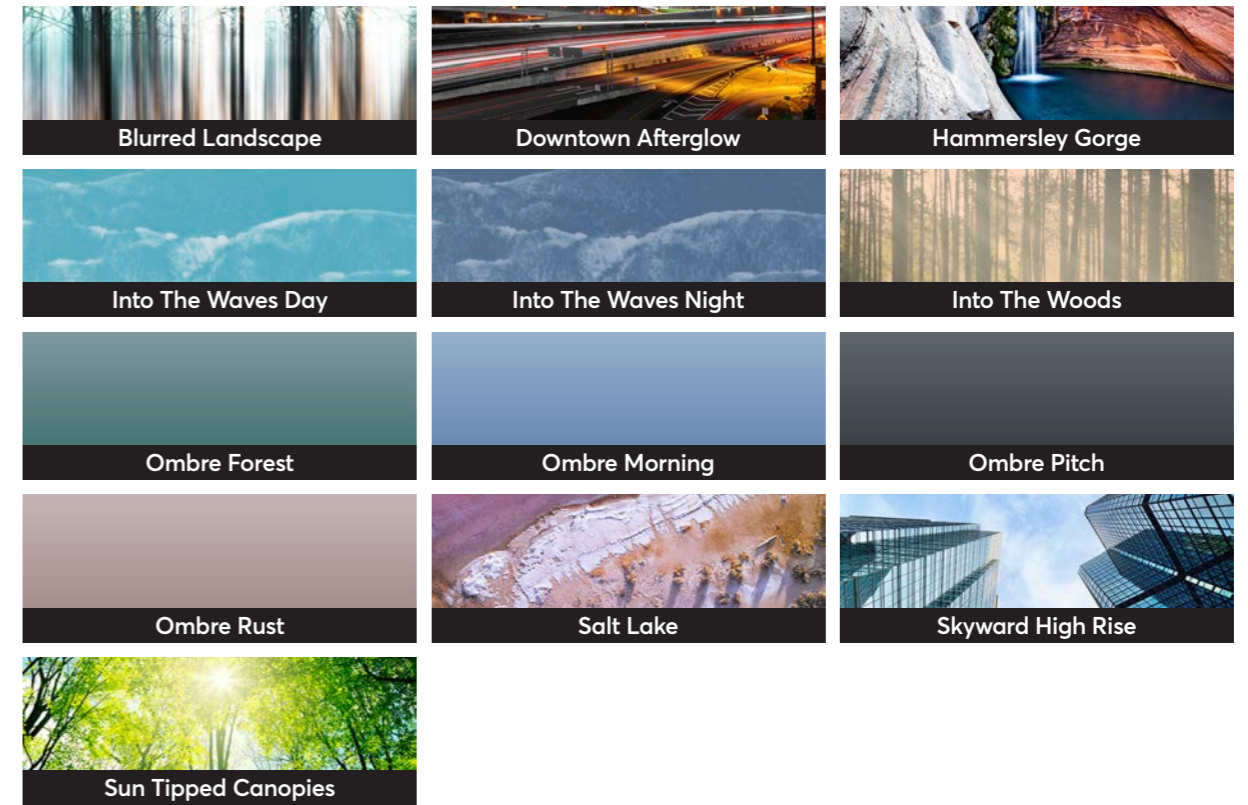
## Materials | Metals, Stone and Concrete



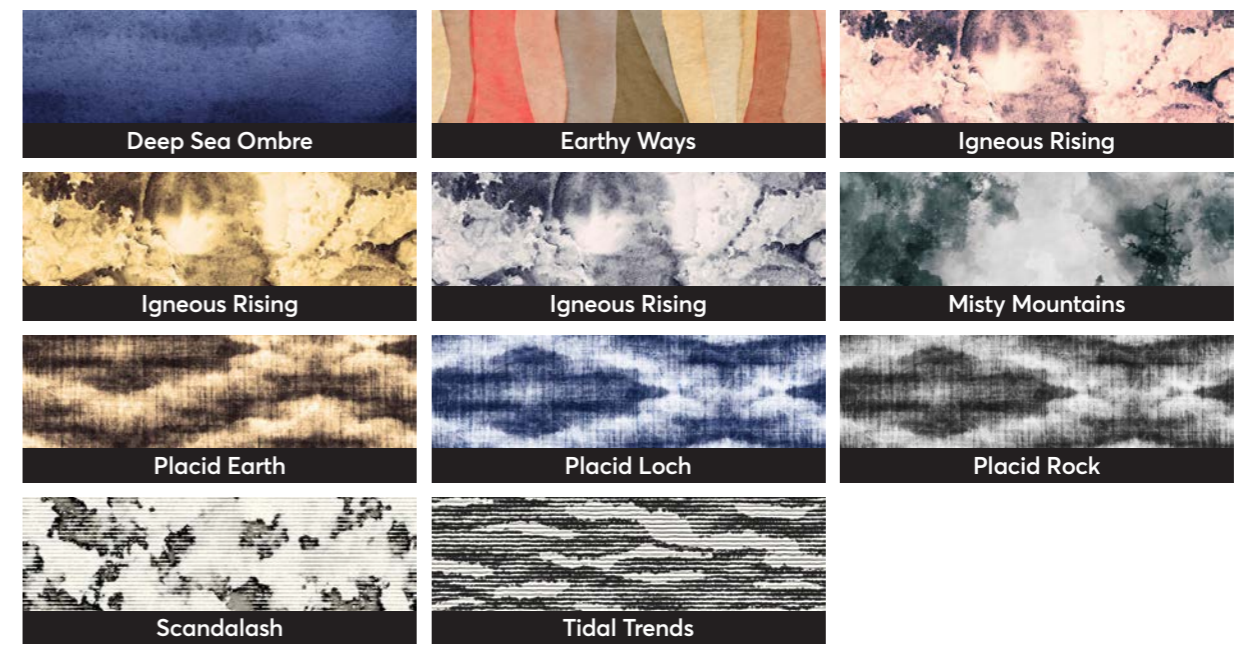
## Materials | Timber



## Artwork | Murals



## Artwork | Abstract

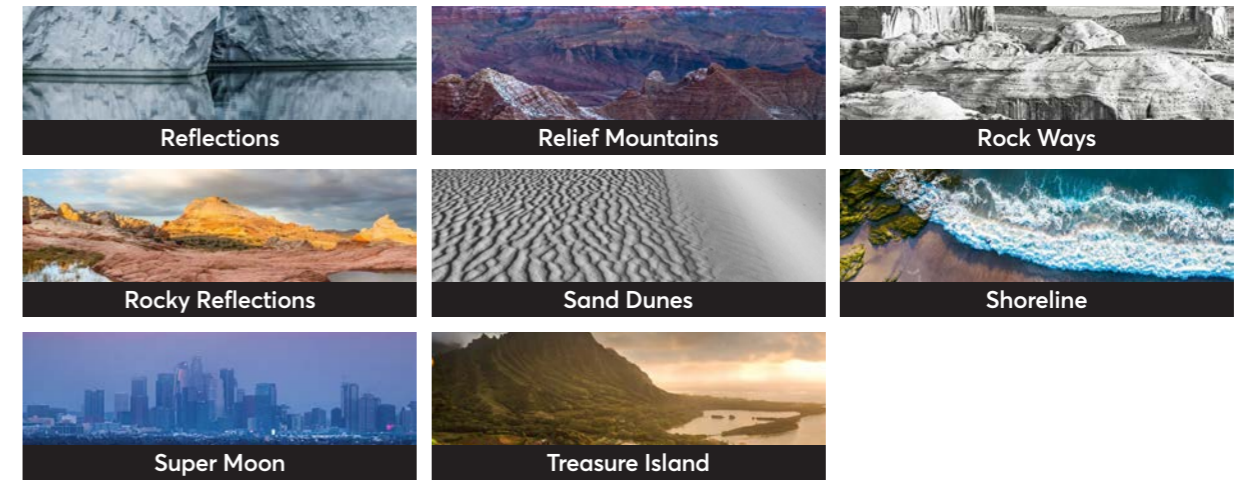
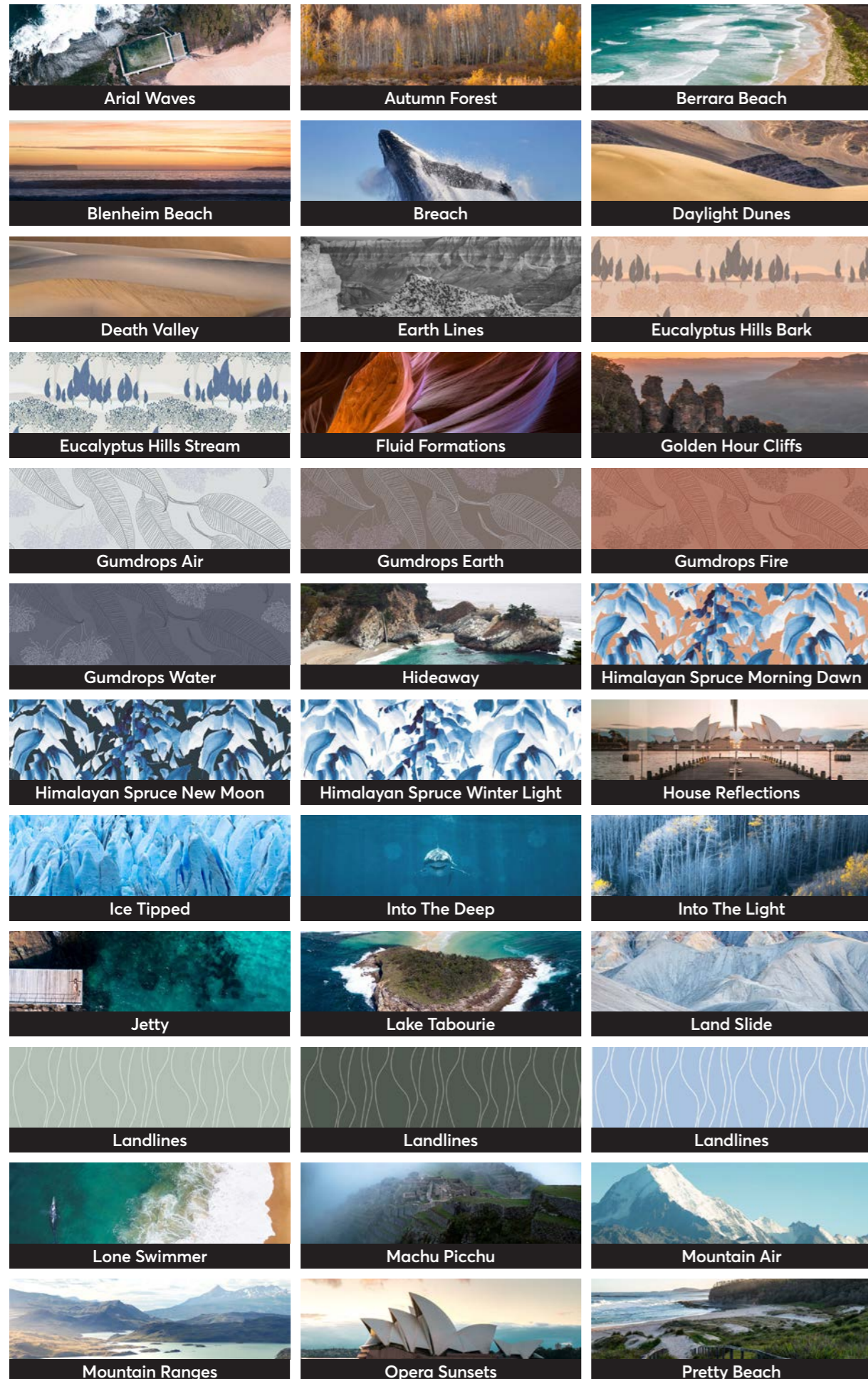


## Artwork | In the Wild





Artwork | Collaborator

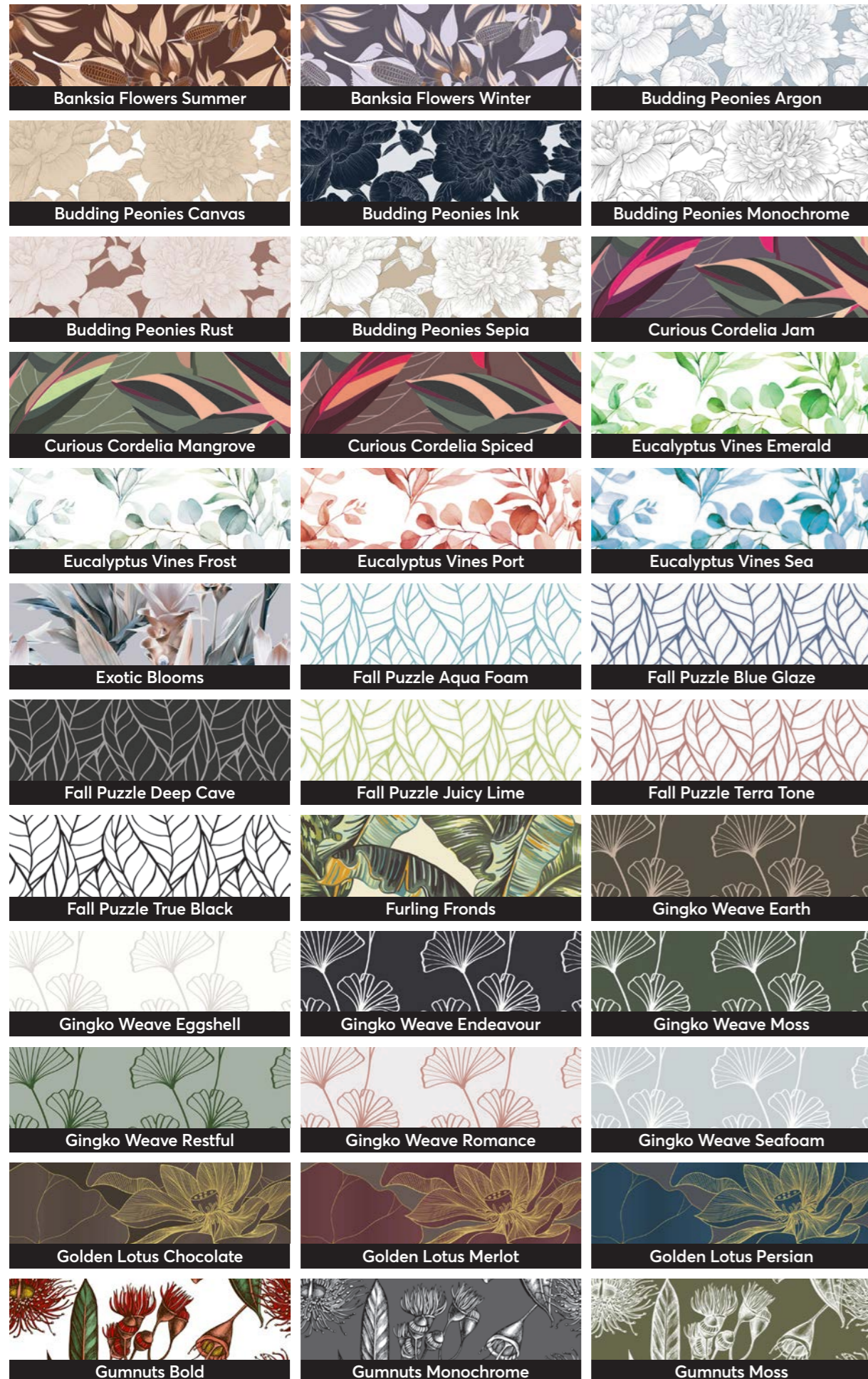


Artwork | Botanicals





Artwork | Botanicals (continued)





## Artwork | Botanicals (continued)



## Artwork | Lines and Geometrics





Artwork | Lines and Geometrics (continued)



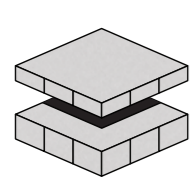




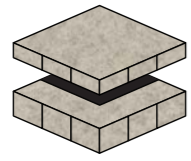
24. Design **Ain't No Wallflower** | Color **Olive** | Substrate **Zintra Grass** | Application **Wall Panels**



# Zintra Print Color



Frost



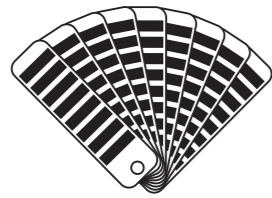
Pebble

## 1. Choose your Base

Frost and Pebble, have been specifically chosen for Zintra Print Color. Available in both 1/2" (12mm) and 1" (24mm). Frost gives a clean, crisp aesthetic with the most accurate color matching, while Pebble offers a softer, more muted aesthetic with a heathered effect.



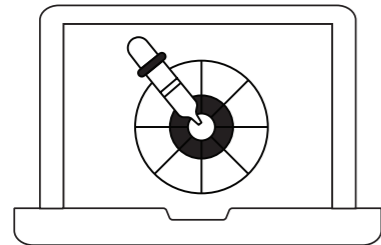
Spirit Colors



Studio Colors

## 2. Choose your Colour

We've carefully chosen a broad, contemporary color palette to expand the range. 56 Studio colors reflect the latest interior design trends, while 10 Spirit colors are bolder and more vibrant, to showcase your school or team brand.



## 3. Create your Own

If one of the 66 Zintra Print colors doesn't quite meet your brief, it's quick and easy to create your own. Simply give us the Pantone color you're trying to match, and we will create a sample for you.



### Edge Banding

The Zintra Print range offers the unique ability to create low volume colored edge banding. The edge banding is available in the full range of Studio and Spirit colors, or we can easily customize the color for you.

Edge banding can be used to match or contrast the printed surface on almost any Zintra panel or Zintra acoustic solution.



# Studio Colors

56 soft colors to reflect the latest interior design trends.



## Spirit Colors

10 vibrant colors to showcase your school or college.

28. These colors are printed on Pebble.





30. Design Zintra Print Color | Color Mulberry, Plum and Thistle | Substrate Zintra Frost | Application Wall Panels





Design Zintra Print Color | Color Creamsicle, Papaya, Red and Shell  
32. Substrate Zintra Pebble | Application Zintra Box Tiles



# Technical Specifications Zintra 1" and 1/2" Panels

## Material

100% solution-dyed polyester.

## Acoustic Rating

1/2" : 0.49 – 0.9 NRC

1" : 0.75 – 0.9 NRC

## Panel Size

48.2" (1225mm) x 110.3" (2800mm) x 1" (24mm) / 1/2" (12mm)

Thickness tolerance +/- .02" (0.5mm)

Width and length tolerance +/- 1/8" (3mm)

## Weight

1/2" : 0.50 lb / ft<sup>2</sup> / 2.4kg / m<sup>2</sup>

1" : 0.75 lb / ft<sup>2</sup> / 3.6 kg /m<sup>2</sup>

## Fabrication

Utility knife and CNC with oscillating knife.

## Installation

Adhere to substrate using contact adhesive or Liquid Nails.

Panels can be mechanically fixed using details similar to glass fittings.

## Fire Rating

ASTM-E84 Class A classification

AS ISO 9705 – 2003 Group 1 classification

EN-13501 B-s2-d0 classification

## Lightfastness

AATCC 16.3, Option 3: Panel color change at 40AFU is 4.5.

## Temperature

Maximum temperature exposure is 240°F (115°C).

## Moisture Absorption

Polyester fibre when exposed to an atmosphere of 120°F (49°C) at 90% relative humidity for four days showed moisture absorption of less than 0.03% by weight.

## VOC Testing

Standard Method Version 1.2 for CDPH 01350: PASS for all testing scenarios.

## Care Instructions

Vacuum to remove dust and remove spills immediately using a clean damp cloth.

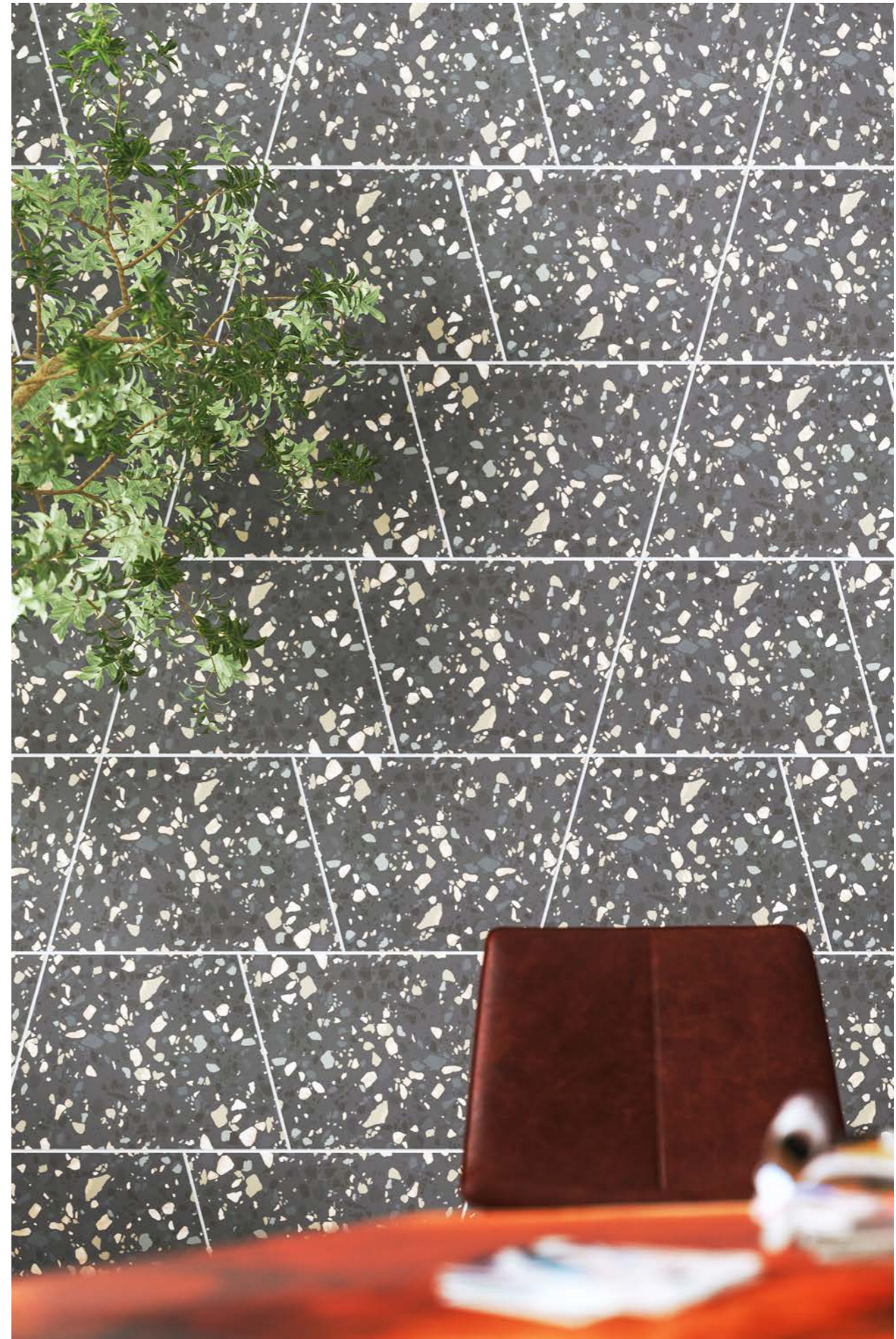
Polyester carpet and fabric cleaners can also be used.

Disinfect by using bleach in accordance with CDC cleaning and disinfection instructions (5 tablespoons of bleach to 1 gallon (3.7ltr) of water. Spray as mist, wiping off surface moisture).

## Sustainability

Zintra is made from 100% recyclable materials.

- 60% post-consumer recycled content from PET bottles.
- 35% pre-consumer recycled content from PET chips
- 5% polylactic acid (PLA)



Design **Gems** | Color **Midnight** | Substrate **Zintra Frost** | Application **Zintra Plain Tiles Trapezium**



Design Abstract | Color Earthy Ways | Substrate Zintra Frost | Application Wall Panels



**zintra**<sup>®</sup>  
**PRINT**

+1 855 922 7377  
hello@zintraacoustic.com  
zintraacoustic.com