

田
畳

TATAMI



Goodrich Global
SINCE 1983

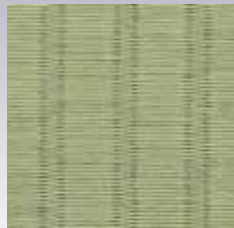
Step 1 Select Tatami Type

TATAMI with Border

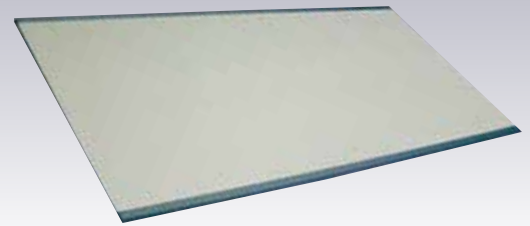


A traditional style TATAMI mat with a border to match any Japanese-themed living space. It can also be suited for areas underneath beds or benches. There is a wide variety of surface and border designs available for your selection.

*** Surface of TATAMI with Border is HIKIME.**



TATAMI Surface: HIKIME



TATAMI without Border

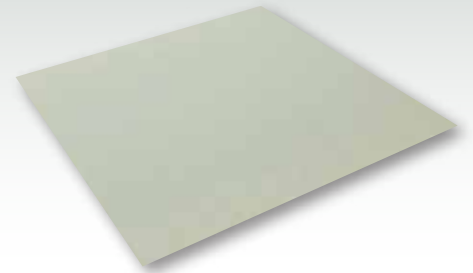


Applying the checked arrangement with the hanjou (a half-size variation of a TATAMI mat), provides a diversity of layout designs to produce a modern ambience. The wide variety of surface and color options available further extends the potential to create pattern combinations.

*** Surface of TATAMI without Border is MESEKI.**



TATAMI Surface: MESEKI



Viela TATAMI



The material used for Viela TATAMI surface is PVC fabric, which makes it suitable for areas with higher frequency of traffic such as hotels and nursing homes that use luggage carts and wheelchairs.

Its excellent durability, strength and colorfastness allow the product to last for a long time.



Step 2

Select Tatami Surface & Color

Plastic TATAMI surface HIKIME Colour Variations



Japanese Paper TATAMI surface HIKIME Colour Variations



* Due to printing, the colour may differ from the actual product.

Plastic TATAMI surface MESEKI Colour Variations

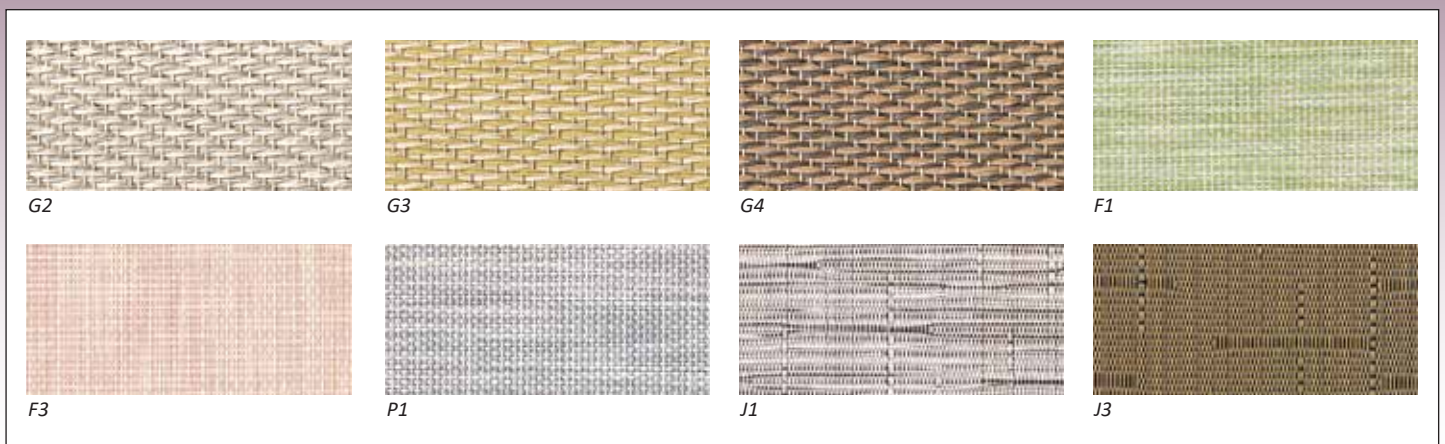


Japanese Paper TATAMI surface MESEKI Colour Variations



* Due to printing, the colour may differ from the actual product.

Viela Color Variation



* Due to printing, the colour may differ from the actual product.

Step 3 Select Border & Base

Border Colour Variation

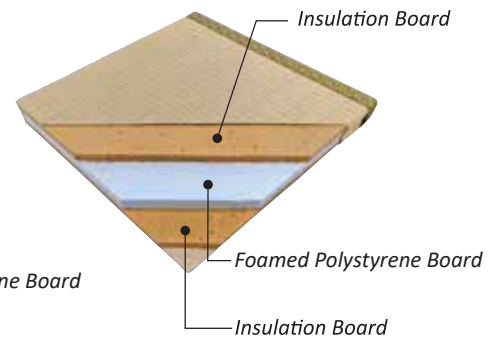
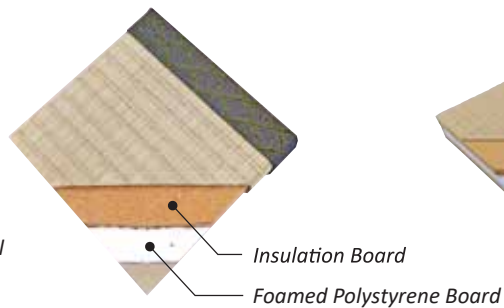
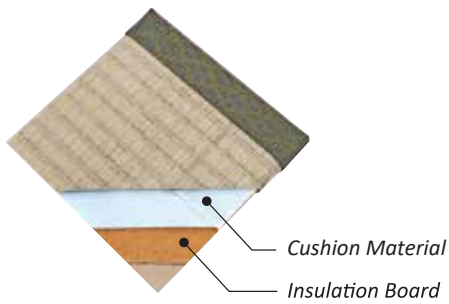


TATAMI Base (Core Material)

■ Thin TATAMI (15 mm)

■ Thin TATAMI (20 to 30 mm)

■ Thick TATAMI (35-55 / 60 mm)



*The composition of the tatami base may change depending on the thickness.

Step 4 Select Size & Thickness

Standard size of TATAMI	<ul style="list-style-type: none"> ■ Medium size: 880 x 1760 mm / 880 x 880 mm ■ Large size: 955 x 1910 mm / 955 x 955 mm
Thickness of TATAMI	<ul style="list-style-type: none"> ■ Thin: 15 - 30 mm ■ Thick: 35 - 60 mm

Minimum Order Quantity :

MOQ according to choice but if QTY is less than 6 pcs, the transportation cost will be expensive.

TATAMI Maintenance Guide

Can I vacuum the tatami mats?

If you use a vacuum cleaner too strong, it will damage the tatami surface, so please apply it lightly and slowly along the grain of the tatami mats.

Is it best to wipe with a dry cloth?

When using a wet cloth, wring it out tightly and wipe it along the grain of the tatami mats. The advantage of using hot water is that the tatami surface dries faster.

Mold grew during the rainy season. How can I get rid of it ?

If mold grew, first remove the mold with a vacuum cleaner and then wipe it off with alcohol.

Tatami Surface Specification

Natural Grass Surface

- ◆ **It has an air purification function.**
Natural Grass has the function of purifying the air by absorbing Nitrogen Dioxide (NO₂) present in the air as an air pollutant.
- ◆ **It has a humidity control function.**
It has an excellent humidity control function, and TATAMI absorbs and releases moisture in the air. It makes your living space comfortable.

Plastic TATAMI Surface

- ◆ The main raw material is made of plastic (Polypropylene), which is resistant to fading, dirt, mold, and has excellent durability.
You can choose from a wide variety of colours and patterns while maintaining the feeling and texture of natural grass.

Japanese Paper TATAMI Surface

- ◆ Japanese Paper is processed to twist into a string and coated with plastic for excellent abrasion resistance, water resistance, and stain resistance.
It has a similar shape to natural grass, and has excellent appearance, cushioning, and moisture absorption and desorption performance. You can choose from a wide variety of colours.

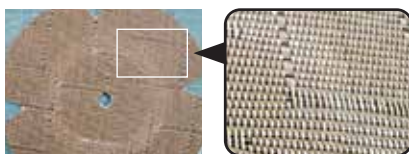
Viela PVC TATAMI

Anti-Slip Safety

The surface is anti-slip even if walking with wet bare feet and is comfortable for people and pets. Slip test (JIS A-1454 17) has been performed, and the sliding resistance coefficient during operation recommended by the Architectural Institute of Japan has been passed. Even if there is some water, it does not cause slipping easily, so it is safe for kids and elderly.

Excellent Durability

It achieved excellent durability in wear resistance tests and has durability on both toughness and flexibility.



【Test Results】

In the Taber type abrasion test (JIS L 1021-11 Fibre floor covering test method-Part 11: comply to abrasion test method), the abrasion wheel was rotated at a rotation speed of 70 rpm and 1000 times, and confirmed that there was no thread breakage.

	Natural Grass Surface (Popular Product)	Plastic Surface	Japanese Paper Surface	Viela
Wear Resistance	☆☆	☆☆☆	☆☆☆	☆☆☆☆☆☆
Water Resistant	☆	☆☆☆☆	☆☆	☆☆☆ *Note 1
Fragrance	☆☆☆	—	—	—
Maintainability	☆	☆☆☆☆	☆☆☆	☆☆☆☆
Price	☆☆☆☆	☆☆☆	☆☆	☆☆

* Performance comparison is only for tatami surface.

* Note 1: Specifications with high water resistance are also available.

Recommended Use Places

Natural Grass Surface	Living room in a facility / Living room in a general house / Buddhist altar room / Guest room, etc.
Plastic Surface	Living room in Nursing care facility / Living room in lodging facility / Hall / Living room in general housing, etc.
Japanese Paper Surface	Hall in lodging facility / Guest rooms / Living room in a general house, etc.
Viela PVC Surface	Accommodation facilities / Guest room in restaurant / Corridors / General housing, etc.



Goodrich Global
SINCE 1983

GOODRICH GLOBAL PTE LTD

Co.Reg. 198300402H

GST.Reg. M2-0050740-1

GOODRICH HQ - 8 Changi South Lane, #05-01, Singapore 486113

T - (65) 6787 8787 | F - (65) 6788 7733 | E - info@goodrichglobal.com

GOODRICH GALLERY - 8 Changi South Lane, #01-01, Singapore 486113

T - (+65) 6788 6868 | F - (65) 6586 8794 | E - gallery@goodrichglobal.com.sg

